



Shree Ganeshaya Namaha

5-Year Numerology Prediction

Anand Kumar

29/08/2008 23:12

Kota, India

Generated By



JYOTISHAM
ASTRO API

Birth Chart

	9	22222
88		

Zodiac Planet & Numbers

7

NAME NUMBER - 7

2

BIRTH NUMBER - 2

2

LIFE PATH NUMBER - 2

6

SOUL URGE NUMBER - 6

☾

MASTER PLANET - MOON

11

MASTER NUMBER - 11

Lucky Colors



Silver



White

Numerology suggests that your lucky colors are Silver, White. These colors bring clarity, positivity, and steady progress into your life. You can use them in your clothing, home decor, accessories, or during key decisions. When you align your choices with these colors, you naturally connect with supportive cosmic energies, enhancing your luck, success, and overall well-being.

Lucky Day

Monday, Sunday, Friday

Your lucky days are Monday, Sunday, Friday. These days bring positivity, success, and clarity. Any decisions made—whether related to personal goals or professional matters—will attract favorable outcomes and lasting growth.

Lucky Dates

2, 11, 20, 29, 1, 4, 7, 10, 13, 16, 19, 22, 25, 28, 31

Your lucky dates are 2, 11, 20, 29, 1, 4, 7, 10, 13, 16, 19, 22, 25, 28, 31. Whenever your lucky days align with any of these dates, the positive impact becomes even stronger. For example - If Monday, Sunday, Friday falls on any of the dates 2, 11, 20, 29, 1, 4, 7, 10, 13, 16, 19, 22, 25, 28, 31. the day becomes especially auspicious for important decisions. On such days, you may experience greater clarity, smoother progress, and more favorable results in both personal and professional matters. These combinations bring you enhanced luck and strong supportive energy.

Lucky Months

January, February, July, November

Your Lucky Months are January, February, July, November whenever your lucky day and lucky dates align within this month, the energy becomes extremely powerful for you. For example - If

Monday, Sunday, Friday falls on any of the dates 2, 11, 20, 29, 1, 4, 7, 10, 13, 16, 19, 22, 25, 28, 31 of any of the lucky months January, February, July, November. the day turns exceptionally fortunate. Such combinations significantly enhance your ability to take successful decisions, attract opportunities, and achieve positive outcomes in both personal and professional areas. These periods bring heightened clarity, stronger support, and a natural flow of success, making them ideal for important plans and new beginnings.

Lucky Years

11 Year of your life 29 Aug 2019 - 28 Aug 2020

16 Year of your life 29 Aug 2024 - 28 Aug 2025

20 Year of your life 29 Aug 2028 - 28 Aug 2029

25 Year of your life 29 Aug 2033 - 28 Aug 2034

29 Year of your life 29 Aug 2037 - 28 Aug 2038

34 Year of your life 29 Aug 2042 - 28 Aug 2043

38 Year of your life 29 Aug 2046 - 28 Aug 2047

43 Year of your life 29 Aug 2051 - 28 Aug 2052

47 Year of your life 29 Aug 2055 - 28 Aug 2056

52 Year of your life 29 Aug 2060 - 28 Aug 2061

56 Year of your life 29 Aug 2064 - 28 Aug 2065

61 Year of your life 29 Aug 2069 - 28 Aug 2070

These are your lucky years according to your Radical Number, and they hold special significance in shaping your personal and professional journey. During these periods, the cosmic vibrations around you become more supportive, allowing you to experience smoother progress, balanced growth, and favorable outcomes in various aspects of life. You may notice increased confidence, clarity of thought, and a stronger ability to make the right choices at the right time.

Lucky years often bring new opportunities, positive changes, and meaningful breakthroughs. Whether it's starting a new project, making an important decision, shifting careers, entering a relationship, or investing in something significant, these years offer an ideal window to take action. When you align your efforts with the natural energy of these fortunate periods, the results tend to be more rewarding and long-lasting.

To make the most of these lucky years, stay focused, trust your intuition, and plan your major moves thoughtfully. With the right mindset and timing, these years can open doors to success, stability, and personal transformation.

Lucky Number

Lucky Number

1

5

3

2

Numerology suggests that your lucky numbers are 1, 5, 3, 2. These numbers bring clarity, positivity, and steady progress into your life. You can use them while choosing important dates, addresses, phone numbers, or during key decisions. When you align your choices with these numbers, you naturally connect with supportive cosmic energies, enhancing your luck, success, and overall well-being.

HOW IT'S CALCULATED: NAME NUMBER

Unraveling the Numerical Significance of Your Name

Your name holds a unique vibration that can be understood through numbers. Here's how we derive both your Double and Single Digit Name Numbers:

Assign Numbers to Letters:

We map each letter in your name to a corresponding number based on a numerology chart. For the name 'ANAND':

Letter	Number
A	1
N	5
A	1
N	5
D	4

Calculate the Total: Add the numbers to find the total sum

- For 'ANAND': $1 + 5 + 1 + 5 + 4 = 16$

Double Digit Number: The sum gives us the Double Digit Name Number.

- 'ANAND' results in 16.

Reduce to a Single Digit: If the sum is a double-digit number, we further reduce it by adding the two digits together

- $1 + 6 = 7$

Single Digit Number: The final single digit is the essence of your name's numerical meaning.

- For 'ANAND', the Single Digit Name Number is 7.

This Single Digit Number, 7, symbolizes the core attributes and life's path encoded within 'ANAND'. It's a compact representation of the name's full numerological analysis.

YOUR DOUBLE DIGIT NAME NUMBER IS

16

The number 16 is strongly connected with introspection, spiritual awakening, and lessons that transform your inner world. In the early stages, you may face sudden changes or emotional challenges that feel confusing or overwhelming. It might seem as though life is pulling you away from familiar things so that you can discover your true strength and direction. These experiences, though difficult at first, help you develop clarity, wisdom, and a deeper understanding of people and situations.

You have a sharp intuitive sense and an ability to see the truth behind appearances. This number often leads to success in fields that involve analysis, counseling, research, teaching, psychology, or anything connected to knowledge and reflection. As you grow, your perspective becomes powerful and insightful, allowing you to guide others as well. Ultimately, number 16 brings maturity, inner strength, and a life shaped by meaningful realizations.

YOUR SINGLE DIGIT NAME NUMBER IS

7

Name Number 7 represents wisdom, intuition, and spiritual growth. People with this number are thoughtful, analytical, and often drawn toward understanding the deeper meaning of life. Life may sometimes bring solitude or challenges that make you reflect deeply, but these experiences strengthen your insight, patience, and inner wisdom. You have a natural ability to learn from experiences, think critically, and uncover truths that others might miss. While obstacles may appear in personal or professional life, they serve as stepping stones to greater understanding and self-awareness. Your journey is about trusting your intuition, embracing knowledge, and growing spiritually, which ultimately leads to success and fulfillment. With focus, persistence, and self-belief, you can turn difficulties into opportunities, gain respect from others, and achieve personal mastery. Name Number 7 reminds you that your intuition, analytical mind, and spiritual insight are your greatest strengths, guiding you toward a life filled with wisdom, inner peace, and meaningful accomplishments.

HOW TO CALCULATE YOUR SINGLE DIGIT BIRTHDAY NUMBER

Unveiling the Numerological Significance of Your Birth Date

Your birthday number holds key insights into your personality and life's path. Let's say your birth date is the 29; here's how to determine your Single Digit Birthday Number:

Add the Digits of Your Birth Date Separate and add the digits of your birth date.

- For 29: $2 + 9 = 11$

Reduce to a Single Digit If the sum is a double-digit number, we further reduce it by adding the two digits together.

- $1 + 1 = 2$

This number, 2, reveals characteristics and the direction of your life path associated with your birth date. It also sheds light on certain aspects of your personality.

YOUR SINGLE DIGIT BIRTH DAY NUMBER IS

2

People born on the dates 2, 11, 20, and 29 fall under the group with Birth Number 2. You are deeply connected with the Moon, and this is why your personality reflects sensitivity, intuition, emotional depth, and a soft inner charm. Your thoughts have a magnetic pull, and your emotional intelligence is far ahead of others.

Your nature is calm and composed, but within you lies a world full of imagination and hidden strength. You observe things deeply, feel everything intensely, and that is what makes you unique. People with Birth Number 2 are naturally creative and tend to master any field that requires imagination, beauty, and finesse.

You hate conflicts. Peace is your priority, and harmony is your comfort zone. You speak politely and behave gracefully, which is why people easily trust and open up to you. A strong reason behind your popularity is your natural ability to understand people's unspoken emotions.

You do not prefer taking the frontline position. Unlike Number 1 people, you are not obsessed with leadership — instead, you excel at guiding, supporting, and balancing energies. You become the silent strength behind successful people. Your intuition is so sharp that you can sense situations before they actually unfold.

Birth Number 2 individuals shine the most in professions requiring creativity, sensitivity, and diplomacy. You work amazingly well in art, writing, healing, music, design, counselling, and any field where emotions and imagination matter. Even though you appear gentle and quiet, you hold the strongest influence in the background.

But just like every coin has two sides, your greatest strength also becomes your biggest weakness. Your emotional nature sometimes makes you overthink, doubt yourself, or take things too personally. Mood swings are common because the Moon rules your emotions. You may become disappointed easily when someone doesn't value your efforts.

You are romantic by heart and loyal in relationships. However, your expectations in love are high, and that is why heartbreaks affect you deeply. You desire emotional security more than anything else. Once you find the right partner, you give your whole heart and treat your partner with sincerity and devotion.

People with Birth Number 2 often rise in life around the age of 34. This age brings emotional stability, confidence, and career clarity. From this point, life becomes smoother because you learn to balance your mind and heart.

Your luckiest date among all dates under Birth Number 2 is 11 of any month. Creativity, intuition, and prosperity are at their peak on this date. Despite your soft and gentle personality, you have the inner capacity to achieve every dream you imagine. You succeed not through power, but through intelligence, patience, and emotional mastery.

UNDERSTANDING MISSING NUMBERS IN NUMEROLOGY

The Essence of Missing Numbers

In numerology, 'Missing Numbers' refer to those numbers that are not present in your numerological chart.

Identification:

- **Analyze Your Chart:** Review your numerological chart, which includes numbers derived from your birth date and name.
- **Spot the Absences:** Notice which numbers (typically between 1 and 9) do not appear in your chart. These are your 'Missing Numbers'.

Why They Matter:

- Missing Numbers highlight aspects or traits that may be lacking or less developed in your personality.
- They can point to areas for potential improvement or growth.
- Understanding and acknowledging your Missing Numbers can guide you in personal development and help in balancing your strengths and weaknesses.

YOUR MISSING NUMBER 1

	9	22222
88	?	

Disadvantages / Problems:

- Difficulty in expressing their inner views.
- Always needs support from others.
- Egoless
- May stammer at the early age.

Remedies / Solutions:

- Drink lots of water
- Offer water to Sun in the mornings.
- Note: Those who have driver or conductor number as 8, do not offer water to Sun. Lota of tamba / Kum Kum. There is no effect of Kua number.
- Take blessings of your father or father figure, personally or by mobile or by photo.

YOUR MISSING NUMBER 3

	9	22222
?		
88		

Disadvantages / Problems:

- Lack of creativity and good imaginative power.
- May surrender to the difficult situation.
- Support Issue / or ask for support.

Remedies / Solutions:

- Must wear a Tulsi mala made of five Mukhi Rudraksha.
- The east side of the house should include scenes of green plants because number three stands for the wood element.
- Put a tilak on your forehead with saffron
- Always carry something made of wood (for example, a sandalwood rosary, a wooden bracelet, or a pen).
- Avoid Rahu Kaal for any important activities or wearing remedies. Check the timing daily.
- Take blessings from your Guru and always give respect full heartedly.

YOUR MISSING NUMBER 4

?	9	22222
88		

Disadvantages / Problems:

- Lack of discipline and organisation.
- Clumsy hands.

Remedies / Solutions:

- One should wear Tulsi Mala along with Five Mukhi Rudraksha and donate coconut as the fourth number means wood element.
- Always carry something wooden, such as a pen, bracelet, or keychain.
- Should wear on lucky date only
- Check Rahu Kaal daily and avoid important tasks during this time.
- Keep South-East landscapes lush with vegetation.
- Must help, support, respect poor needy people by giving them food, water, medicines etc.

YOUR MISSING NUMBER 5

	9	22222
	?	
88		

Disadvantages / Problems:

- Lack of balance in every sphere of life.
- Lack the drive and versatility to get their goals.
- Confidence
- Travelling ?

Remedies / Solutions:

- Must wear clear crystal (Spatik) bracelet or mala 23 bits, It will cleanse the aura and there will be no negative thoughts.
- Must wear any shade of green colour daily.
- Must eat green vegetables.
- Offer green grass to cow every day, specially on Wednesday.
- Walk barefoot every morning.
- Must help, support and respect poor, needy, orphan kids by giving them clothes, food, water, medicines, education, books etc
- Green Mask / Wear Crystal Mala/ Green Shade/ Hankerchief/Sabji/ Dhaniya/

YOUR MISSING NUMBER 6

	9	22222
88		?

Disadvantages / Problems:

- Poor bonding with home and family.
- Weak relationship sector.
- May face marriage problem.
- Do not get the support from the society at the time of crunch.

Remedies / Solutions:

- Must wear gold & silver combination metal strap watch.
- Vibration of metal watch enters body & connects you with the time & vice versa.
- Spend money for yourself by buying branded clothes, perfumes, accessories etc.

YOUR MISSING NUMBER 7

	9	22222
		?
88		

Disadvantages / Problems:

- Lack of spiritualism.
- Religion, occult, education.
- May not care for the feelings of others.
- No Dokha to 7,
- No Setback

Remedies / Solutions:

- Must wear gold metal strap watch.
- Do lots of religious work like performing puja, giving time and services to religious places, giving donations and providing better infrastructure if possible. Devote yourself in religious activities.

UNDERSTANDING DRIVER & CONDUCTOR NUMBERS

Brief Guide:

Driver Number:

- Represents your core nature and motivations.
- Calculated by adding the digits of your birth day.
- Born on 29th ($2+9=11$, $1+1=2$), Driver Number is 2.

Conductor Number:

- Reflects how you navigate through life's challenges.
- Calculated from the sum of all digits in your full birth date (day, month, year) reduced to a single digit.
- Born on 29th Aug 2008 ($2+9+0+8+2+0+0+8=29$, $2+9=11$), Conductor Number is 11.

These numbers provide insights into your personality and life approach.

DRIVER & CONDUCTOR COMBINATION

In this combination, the driver number is 2 while the conductor number is also 2, giving you strong intuition, sensitivity, and caring nature. You understand emotions deeply and can guide others with compassion. You must guard against mood swings and overthinking, as they may disturb your focus. Careers in healing, hospitality, creative writing, psychology, teaching, and design can bring great satisfaction. Avoid trusting people too quickly or making decisions based only on feelings. Practicing meditation and grounding techniques will stabilize your energy. When your emotional strength is balanced, you shine as a supportive and wise individual.

UNDERSTANDING 2 NUMBER ARROWS IN NUMEROLOGY

2 Number Arrows:

- These arrows represent combinations of two specific numbers in your numerology chart, not necessarily consecutive.
- They highlight unique strengths or characteristics based on those two numbers.
- Example: If numbers 3 and 7 are both prominent in your chart, this combination forms a 2 Number Arrow, symbolizing a blend of their respective energies.

Your 2 Number Arrows:

Arrow 1: Numbers 9 and 2 (9-2 Arrow) - Two-number arrow positions 2-3

Arrow 2: Numbers 2 and 8 (2-8 Arrow) - Two-number arrow positions 3-7

Repeated Numbers

NUMBER 2 OCCURED 5 TIMES IN YOUR CHART

	9	22222
88		

If the number 2 repeats 5 times in your birth chart, it creates an extraordinary level of emotional awareness, making you highly receptive to every vibration around you. Your heart becomes your strongest guide, but also your biggest weakness. You can sense intentions, shifts in mood, and unspoken feelings with remarkable accuracy, yet this sensitivity pulls you into emotional highs and lows more often than others. You care deeply, sometimes to the point of draining yourself, because you struggle to set boundaries or say “no.” This repetition makes you imaginative, artistic, and spiritually attuned, but it can also create fear of rejection, dependency on others’ approval, and difficulty trusting your own decisions. You may retreat into silence when overwhelmed, leaving people confused about your true feelings. If numbers 4 or 9 are also present in your chart, they bring strength, balance, and a protective shield that helps you control your emotions, make clearer choices, and use your sensitivity in a more empowered way.

Repeated Numbers

NUMBER 8 OCCURED 2 TIMES IN YOUR CHART

	9	22222
88		

If the number 8 repeats 2 times in your birth chart, it gives you a strong sense of ambition, discipline, and desire for material success. You are naturally focused on achieving your goals and possess the determination to overcome obstacles, yet this double 8 energy can make you overly serious, controlling, or impatient when things don't move according to your plans. You have excellent organizational skills and a sharp mind for business, finances, or leadership, but you may sometimes struggle with balancing work and personal life. You value power, recognition, and stability, and others often look up to your ability to take responsibility and make decisions. If numbers 2 or 5 are also present in your chart, they help balance your intensity, improve emotional intelligence, and guide you to use your ambition in a more harmonious and sustainable way.



**5 YEAR
PREDICTION**

Year 2025 Prediction

A YEAR OF NEW STARTS

The personal year 1 represents sun and in this year you can expect more enthusiasm and energy which will help you to escalate or accomplish your unrealized goals and dreams whether it is related to your job/ business / career/home or marriage etc. Remember whatever you are going to start this year, it will have a great impact in the overall success of your coming life. It is highly recommended that don't miss the potential of this year.

Luck Factor

With a luck factor between 90% and 100%, this year moves in your favour with strong cosmic support and smooth progress in most areas of life. The positive flow of energy helps you overcome past obstacles and step into a phase where your hard work finally starts paying off. You may notice that opportunities arrive at the right time, people respond positively to your ideas, and your confidence grows naturally. Even challenging situations resolve faster than usual, allowing you to stay motivated and focused. Financial stability improves as you make smarter decisions or receive unexpected support. Your personal life also becomes more balanced, giving you emotional clarity and deeper understanding of your priorities. Overall, this year encourages personal growth, bold actions, and successful outcomes—just stay consistent, trust your intuition, and keep moving forward with a positive mindset.

Key Themes

This period opens a strong phase of new beginnings, encouraging you to step forward with greater confidence and independence. You may feel a natural push to take charge of situations that once made you hesitate, and this shift will strengthen your leadership qualities. Opportunities may appear suddenly, especially in areas where you have been waiting for progress. Trusting your decisions will become easier as your inner clarity improves. This is also a good time to begin personal projects or explore ideas that reflect your individuality. You might notice people looking to you for guidance or valuing your initiative more than before. Even small actions you take now can create long-term positive changes. Stay focused, stay organized, and don't be afraid to start fresh when you feel it's needed. Your determination will open doors that were previously closed, helping you move ahead with purpose.

Opportunities

This year opens a strong pathway for you to step into your own power. New projects will begin to unfold naturally, giving you a chance to show your originality. You may notice that people look to you for direction more than before, which means your leadership qualities will start becoming

visible. Situations that once felt confusing will now push you to make independent decisions, and every choice you take will quietly build your confidence. Unexpected chances may come from areas you never planned, helping you break old patterns and start something fresh. A new idea or project could become a turning point for you, bringing clarity about what you truly want. Overall, this year feels like a shift where you take control, move ahead with courage, and create your own opportunities rather than waiting for them.

Challenges

This year, you may face challenges that test your patience and ability to collaborate effectively. Situations might arise where impulsive reactions or a desire to act independently could create obstacles. Learning to work smoothly with others will be essential, as teamwork and cooperation will play a crucial role in achieving your goals. At times, managing your ego and staying humble in interactions may feel difficult, but doing so will help you maintain harmony in both personal and professional relationships. Avoiding impatience, especially in high-pressure scenarios, will prevent unnecessary conflicts and allow you to make thoughtful decisions. By acknowledging these challenges and approaching them with mindfulness, you will gradually build stronger bonds and gain respect from those around you. The lessons learned this year will not only help you navigate obstacles but also prepare you for smoother progress in the coming years.

Focus Areas

- Career initiation
- Personal independence
- Leadership development

Practical Guidance

During this Personal Year 1, focus on initiating new projects and taking bold steps forward. This is a year of new beginnings and fresh starts. Make decisions that align with your long-term vision and don't hesitate to take leadership roles. Be proactive, maintain a positive mindset, and seize opportunities as they arise. Remember, what you start this year will have a significant impact on your future success.

NOTE

*1–8 is an anti-combination because the Sun and Saturn hold opposite energies. When these forces meet, they can create delays, pressure, or emotional friction. This combination requires patience, discipline, and thoughtful decisions to maintain balance and achieve steady progress throughout the year.

Timing Tips

The best times for important decisions and actions during this year are typically when you feel aligned with the year's energy. Pay attention to your intuition and make major moves when you feel

Year 2026 Prediction

SLOW AND GENTLE YEAR

It represents the year of moon. It's a slow and gentle year & demands patient waiting (which nobody wants). You will be tempted to push and make the things happen. It works in personal year 1 but it is a waste of time and energy in this year. It is a year to analyse the things and to consolidate the previous and present things. By doing this you will find that you have reached where you want to be by the end of the year.

Luck Factor

This year moves at a softer and slower pace, encouraging you to focus on patience, healing, and steady growth instead of quick results. With a 40% luck factor, progress is possible, but it will come in small steps rather than sudden breakthroughs. You may notice that certain plans take longer to develop, or situations unfold more gradually than expected. This pace is actually helpful, as it gives you time to reflect, correct mistakes, and strengthen your foundation. Avoid rushing decisions—clarity improves when you move calmly and thoughtfully. Emotional balance becomes important, and you may feel more connected to routines, simple habits, and personal well-being. Even if external achievements seem slow, internal growth becomes strong. By staying consistent, patient, and open to learning, you can transform this gentle year into a period of meaningful stability and inner progress.

Key Themes

This period encourages you to slow down and approach life with calm patience. You may notice that progress happens steadily rather than quickly, but this gentle pace actually helps you build stronger foundations for your future. Partnerships—whether in friendships, school projects, or family matters—play an important role now. Working with others, listening openly, and cooperating can bring better results than trying to handle everything alone. Small supportive connections may grow into meaningful bonds if you nurture them with honesty and understanding. You might also feel more aware of your responsibilities, guiding you to organize your plans more carefully. This is a good time to strengthen routines, improve habits, and create stability in the areas that matter to you. With consistent effort, you can set up a structure that supports long-term growth and gives you confidence for the next steps ahead.

Opportunities

This year moves in a gentler but deeply meaningful direction for you, opening doors to supportive partnerships and stronger emotional connections. You'll notice that teamwork becomes important, and the people who enter your life will bring balance, guidance, and comfort. Instead of rushing

decisions, you'll naturally develop patience, which helps you avoid misunderstandings and build trust more easily. Slowly, your relationships will feel more stable, and those around you may rely on you in new ways. A meaningful partnership—personal or professional—could shape your progress, giving you clarity about what you truly want. You'll also learn how cooperation brings better results than handling everything alone, allowing you to grow through shared ideas and mutual understanding. Overall, this year strengthens your bonds, deepens your communication, and gives you a calm, steady support system that helps you move forward with confidence and emotional stability.

Challenges

This year may present several challenges that test your patience and resilience. You might face delays in important projects or personal goals, requiring you to adapt and stay calm even when things don't move as quickly as you hoped. Maintaining patience will be crucial, as rushing decisions could lead to mistakes or frustration. It's also important to focus on your independence and avoid relying too heavily on others for support, as this period encourages self-reliance and personal growth. While these challenges may feel demanding, they are opportunities to strengthen your problem-solving skills and emotional stability. By facing delays with a steady mindset and reducing dependency on external factors, you can emerge stronger, more confident, and better prepared for future opportunities. Consistent effort and patience will turn these challenges into lessons that shape your long-term success.

Focus Areas

- Partnership building
- Patience cultivation
- Cooperative efforts

Practical Guidance

During this Personal Year 2, practice patience and avoid rushing into decisions. This is a slow and gentle year that requires careful analysis and consolidation. Focus on building partnerships and cooperative efforts rather than pushing for immediate results. Take time to review and organize what you've already started. By the end of the year, you'll find yourself exactly where you need to be.

Timing Tips

The best times for important decisions and actions during this year are typically when you feel aligned with the year's energy. Pay attention to your intuition and make major moves when you feel confident and prepared.

Year 2027 Prediction

YEAR OF EDUCATION / KNOWLEDGE / SPIRITUALTY / RELIGION / OCCULT SCIENCE WORK

This is a year of Jupiter. This year your mind might be thinking of fun activities but they are unlikely to happen. It is better you focus on the things related education, knowledge, spirituality / religion. For people who are associated / want to be associated with the field of occult, education, spiritualism or religion, this year will bring fantastic results. Expansion is possible in this year. However, if you are thinking of business / job growth, then the results may vary from person to person.

Luck Factor

This year brings strong support and positive momentum for learning, spiritual pursuits, and specialized knowledge, reflecting a luck factor of 80%–90%. Career and business related to education, research, spiritual work, or occult sciences are likely to gain recognition and growth. Opportunities to showcase your skills and expand your network may come naturally, while mentors or like-minded individuals provide guidance. Studies and spiritual practices will bring clarity, satisfaction, and personal development, helping you align your ambitions with higher goals. Financial stability improves gradually, making it easier to invest in learning, courses, or projects that enhance long-term prospects. Overall, this year encourages bold steps, focused efforts, and meaningful progress in knowledge, spirituality, and personal growth, turning your hard work into rewarding and transformative experiences.

Job & Business

This year indicates a slow and cautious flow of energy in your job or business, reflecting a 30%–40%. Opportunities in education, research, spiritual, or occult science work may appear but require persistent effort and careful planning. Progress may be gradual, and obstacles could arise from competition, delays, or misunderstandings in professional collaborations. Financial gains may be limited or slower than expected, so prudent management and avoiding risky investments are essential. Networking and partnerships demand patience, clear communication, and realistic expectations. While the year may not bring rapid career growth, consistent hard work, skill development, and strategic planning can help you maintain stability, navigate challenges, and prepare the groundwork for better opportunities in the future.

Key Themes

This period brings a strong boost to your creativity, communication, and self-expression, helping you share your ideas with more clarity and confidence. You may notice that new thoughts come

naturally, allowing you to work on projects, studies, or personal goals with a fresh and imaginative approach. Social connections also become meaningful during this time, as supportive people enter your life and encourage you to grow. Teamwork and group discussions may open new opportunities, while your ability to express yourself improves your relationships with friends, classmates, and others around you. If you've been planning something new, this is the right moment to take the first steps because your mind and energy will work in sync. Just stay patient, stay organized, and trust your abilities. Overall, this phase inspires progress, confidence, and positive connections that help you move forward in a balanced and productive way.

Opportunities

This year brings a strong flow of creativity into your life, pushing you to explore new ideas and express your talents more openly. You may find yourself drawn toward artistic work, content creation, or activities that let you show your unique style. At the same time, your social circle is set to expand, connecting you with people who appreciate your abilities and encourage your growth. These new connections can turn into collaborations or opportunities that lift you forward. As you share your work or thoughts more freely, others will begin to recognize your natural strengths, giving you confidence to move ahead. Overall, this year helps you grow creatively, build meaningful bonds, and step into a space where your talents finally get the attention they deserve.

Challenges

This year, challenges may arise around managing scattered energy and staying truly focused on what matters. You might feel pulled in multiple directions, making it difficult to give your best to any single task. Avoiding superficiality will be essential, as paying attention only to appearances or minor details could distract you from meaningful progress. The key is to identify your priorities clearly and invest your energy where it truly counts, even if it means saying no to distractions or less important commitments. These challenges encourage you to build discipline, sharpen your focus, and strengthen your decision-making. By learning to channel your energy efficiently and maintain a deep, thoughtful approach to your work and relationships, you can transform scattered efforts into tangible results. Overcoming these challenges will not only increase productivity but also provide clarity and long-term satisfaction.

Focus Areas

- Creative expression
- Social connections
- Communication skills

Practical Guidance

During this Personal Year 3, channel your energy toward education, knowledge, spirituality, and creative expression. This is an excellent year for learning, teaching, or engaging in religious and spiritual practices. If you're interested in occult sciences, this year will be particularly favorable.

Focus on expanding your mind and connecting with others through communication and social activities.

NOTE

Note: To improve job and business outcomes this year, combine your work with spiritual or religious practices. Ethical actions, disciplined routines, and mindful efforts can attract opportunities, reduce challenges, and support steady growth in your professional life.

Timing Tips

The best times for important decisions and actions during this year are typically when you feel aligned with the year's energy. Pay attention to your intuition and make major moves when you feel confident and prepared.

Year 2028 Prediction

FOCUSED APPROACH, HARD WORK AND REALISTIC GOALS ACHIEVED

This is a year of Rahu which demands or dictates the two things - hard work and focussed approach, Goal Orientation, Realistic, . This year says that if you set a specific goal at the beginning of the year and work hard to achieve that goal, then by the end of the year you will have something to show yourself and to the world. Your pocket will be full of accomplishments. If you don't work hard and have no specific goal in mind, then the tone of the year is going to be serious, heavy and restricting. That is why this is the best or worst year for someone.

Luck Factor

This year may present significant challenges, reflecting a 20%–30% luck factor, where health concerns, emotional stress, or critical obstacles could impact progress. Professional and personal goals might face delays, setbacks, or unexpected difficulties despite your efforts. Financial and career matters require extra caution and careful planning. Emotional balance and self-care are essential to navigate stress and avoid burnout. Relationships may experience tension, and decision-making might feel more difficult than usual. While results may be limited, staying patient, focused, and adopting a disciplined approach can help you manage obstacles and gradually maintain stability. This period encourages resilience, learning from challenges, and building the foundation for better outcomes in the coming years.

Key Themes

This period focuses strongly on hard work, discipline, and building long-term stability in your life. You may feel more serious about your goals and more motivated to create a clear structure for your future. Whether it's studies, personal projects, or planning ahead, your organized approach will help you stay steady and avoid unnecessary stress. Responsibilities may increase, but you'll handle them with patience and maturity. This is also a time to set routines, improve your work habits, and make decisions that support long-lasting growth. Small, consistent efforts will bring better results than rushing, so focus on planning wisely and working step-by-step. Support from family or mentors may guide you, especially when you need clarity. Overall, this phase encourages strong foundations, practical thinking, and disciplined progress that help you move forward with confidence and long-term stability

Opportunities

This year brings a phase of steady growth where you start building strong foundations in different areas of your life. You may feel a natural push to organize your routine, clear old clutter, and bring more structure into your plans. As you work with consistency, small efforts will begin turning into

solid progress, especially in studies, career goals, or personal projects. You'll notice that your patience improves, and you take decisions more carefully, which helps you avoid unnecessary stress. Responsibilities may increase, but they will give you maturity and confidence. This year also supports long-term planning—anything you set up now will stay strong for years. Overall, this is a practical and grounded time where your hard work pays off, your life becomes more balanced, and you create a stable path toward your future.

Challenges

This year, challenges may center around maintaining flexibility and handling the pressures of daily responsibilities. You might encounter situations that test your ability to adapt, requiring you to avoid rigidity in your thoughts and routines. Managing stress will be an important task, as high demands from work or personal life could easily create tension. Finding a healthy work-life balance will be crucial to ensure that neither your professional nor personal well-being suffers. These challenges encourage you to develop coping strategies, stay organized, and prioritize self-care while fulfilling obligations. By learning to respond rather than react to pressure, and by embracing flexibility in your approach, you can navigate difficulties more smoothly. Overcoming these challenges will help you maintain harmony in life, increase resilience, and achieve a steady sense of accomplishment, even during demanding times.

Focus Areas

- Work organization
- Stability building
- Practical planning

Practical Guidance

During this Personal Year 4, adopt a focused and disciplined approach to your goals. This year rewards hard work, organization, and realistic planning. Concentrate on building stability in your career, finances, and personal life. Be methodical in your approach, set practical goals, and work consistently toward achieving them. Avoid shortcuts and focus on long-term foundations.

Timing Tips

The best times for important decisions and actions during this year are typically when you feel aligned with the year's energy. Pay attention to your intuition and make major moves when you feel confident and prepared.

SUCCESS AND EXPECT THE UNEXPECTED

This is a year of mercury and we know mercury is comfortable and compatible with all the planets. So everyone can expect something from good to great. This year is an auspicious year for change and variety be it your career / home / marriage / country or anything. You may expect the unexpected gains in area of your passion. If you want to go bungee jumping but never get around it, be assured to go for it.

Luck Factor

This year is marked by extraordinary potential, reflecting a 100% luck factor. Major successes and unexpected opportunities are likely to appear in both professional and personal life. Sudden favorable changes may open new pathways for growth, recognition, and financial gains. While surprises and unforeseen events may occur, they are expected to work in your favor, providing advantages that amplify your hard work and determination. Maintaining focus, adaptability, and a proactive approach will help you fully utilize these opportunities. This is a year to embrace challenges with confidence, turn unexpected situations into benefits, and achieve significant milestones that strengthen your foundation for future success.

Key Themes

This period invites noticeable changes in your routine and mindset, pushing you toward more freedom and new experiences. You may feel a strong urge to break old patterns, try fresh ideas, and step out of your comfort zone. Small or big shifts—like learning something new, starting a different activity, or exploring unfamiliar places—can open exciting opportunities. Your curiosity will increase, helping you discover skills or interests you didn't realize you had. Even in your daily life, you might notice situations that challenge you to think differently and make more independent choices. These changes aren't meant to create pressure; instead, they guide you toward growth and maturity. You may also meet people who inspire you or bring a new outlook to your life. Overall, this time encourages bold steps, open-minded thinking, and a sense of adventure that helps you understand yourself better and move forward with confidence.

Opportunities

This year brings exciting opportunities for growth through change and exploration. You may find yourself stepping out of familiar routines, feeling a strong urge to travel, meet new people, or discover different cultures and ideas. These experiences will open doors you hadn't imagined, helping you see new paths for personal and professional growth. Embracing change will allow you to leave behind what no longer serves you, making space for fresh experiences and unexpected

opportunities. Each journey or new possibility you take will boost your confidence and broaden your perspective, showing you the value of being adaptable and adventurous. Overall, this year encourages you to welcome change, explore the unknown, and let new opportunities guide you toward exciting and fulfilling experiences.

Challenges

This year, challenges may test your ability to remain calm and composed in the face of restlessness. You might feel an urge to act quickly or make impulsive decisions, but learning to pause and evaluate situations carefully will be essential. Avoiding impulsiveness will help you prevent unnecessary mistakes and maintain control over both personal and professional matters. Maintaining stability in your routine, emotions, and relationships will require conscious effort, as external pressures or unexpected changes could create tension. These challenges are meant to strengthen your self-discipline and emotional resilience. By developing patience, staying grounded, and responding thoughtfully rather than reactively, you can navigate this period successfully. Overcoming these obstacles will not only help you achieve steadiness in your life but also empower you to handle future situations with confidence, balance, and clarity.

Focus Areas

- Embracing change
- Adventure and travel
- Freedom and flexibility

Practical Guidance

During this Personal Year 5, embrace change and be open to unexpected opportunities. This is a year of adventure, travel, and new experiences. Stay flexible and adaptable, as changes may come rapidly. Explore new possibilities, take calculated risks, and enjoy the freedom this year offers. Be ready to pivot when necessary and make the most of diverse opportunities.

Timing Tips

The best times for important decisions and actions during this year are typically when you feel aligned with the year's energy. Pay attention to your intuition and make major moves when you feel confident and prepared.

Gemstone Recommendation

GEMSTONE RECOMMENDATION

Based on your Radical Number 2, the recommended gemstone is Pearl[Moti] (White, Cream, Blue). This gemstone is associated with Moon and can help enhance positive energies in your life.

Gemstone: Pearl[Moti] (White, Cream, Blue)

Finger: Ring finger/neck

Best Day to Start Wearing: Monday

Metal Suggestion: Silver

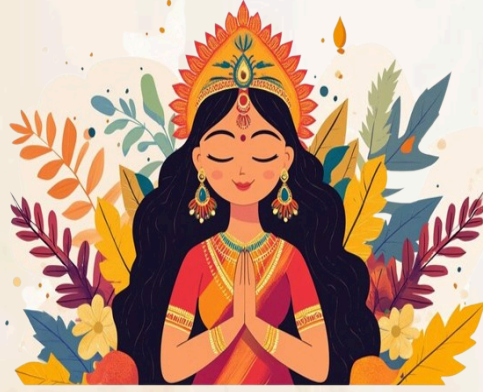
Benefits of Wearing This Gemstone:

- Emotional Stability
- Financial Prosperity
- Positive Luck
- Acknowledgment
- Notoriety
- Strong Recall

RECOMMENDED RATTIS (CARATS) BASED ON BODY WEIGHT

Based on traditional beliefs, the weight of a gemstone to be worn is often recommended based on the individual's body weight. The general guideline suggests wearing 1 ratti (carat) of the gemstone for every 12 kilograms of body weight. The table below provides an easy reference for the recommended rattis based on different weight ranges:

Body Weight (KG)	Recommended Rattis (Carats)
0-12	1
13-24	2
25-36	3
37-48	4
49-60	5
61-72	6
73-84	7
85-96	8
97-108	9
109-120	10



Thank You



JYOTISHAM
ASTRO API

For Any Inquiries Please Contact

Synilogic Tech Private Limited
C-7, Santosh Nagar-1, Borkheda, Kota, India, Rajasthan

www.synilogictech.com

Synilogictech@gmail.com

[919358656189](tel:919358656189)