



|| Shree Ganeshaya Namaha ||

THE BUSINESS CODE: A NUMEROLOGY GUIDE TO STARTUP SUCCESS

Anand Kumar

29/08/2008 23:12

Kota, India

Generated By



JYOTISHAM
ASTRO API

Life Path Number

MEANING

The Life Path Number is a key element in numerology, derived from an individual's birth date. It represents the primary characteristics and opportunities that may shape one's life journey.

How to Calculate

Add all digits in the birth date and reduce to a single digit

2008 / 8 / 29 = 2+0+0+8+8+2+9 = 29, Then 11 = 2

Unveiling the Power of Life Path Number 2

When Life Path Number 2 shapes your professional world, collaboration becomes your superpower. You don't just work with people—you create bridges between different perspectives, turning potential conflicts into opportunities for growth. Your career thrives in environments where teamwork matters more than individual achievement, and your natural ability to read between the lines makes you exceptional at understanding what colleagues really need. The professional landscape rewards those who can unite diverse talents, and that's exactly where you excel.

Interpreting the Everyday Impact of Life Path Number 2

Your workday unfolds through a lens of empathy and understanding that transforms ordinary interactions into meaningful connections. Colleagues gravitate toward you because you listen not just to words, but to the emotions and intentions behind them. This sensitivity allows you to navigate office politics with grace, often preventing misunderstandings before they escalate. Your professional environment benefits from your presence because you're the person who notices when someone needs support, even before they ask. While your harmonious approach creates positive dynamics, remember that sometimes professional growth requires having difficult conversations that can't be smoothed over.

Unique Interpretations of Life Path Number 2

Your professional journey follows a rhythm of partnership and mutual support that sets you apart in competitive environments. You've mastered the art of making others feel valued, which in turn makes you indispensable to any team. Your career path isn't about climbing over others—it's about lifting everyone together, creating a rising tide that benefits all. This collaborative philosophy often leads to opportunities that wouldn't exist in purely competitive settings. The challenge ahead involves learning when to prioritize your own advancement without feeling guilty about pursuing your professional goals.

What types of work environments allow my collaborative nature to thrive?

Environments that prioritize team success over individual achievement are your natural habitat. Look for organizations with flat hierarchies where cross-functional collaboration is essential—startups scaling their operations, design agencies requiring creative partnerships, and healthcare settings where patient outcomes depend on coordinated care teams. Educational institutions and nonprofit organizations also value your ability to build consensus and create inclusive environments. Avoid highly competitive, cutthroat cultures where collaboration is seen as weakness rather than strength. Your ideal workplace celebrates diverse perspectives and recognizes that the best solutions emerge from collective intelligence.

How can I leverage my diplomatic skills without sacrificing my own career advancement?

Frame your collaborative approach as a strategic advantage rather than a passive trait. Document how your ability to build partnerships has directly contributed to project success—quantify the value you bring through conflict resolution, team cohesion, and stakeholder alignment. When negotiating for promotions or raises, emphasize how your diplomatic skills enable you to manage complex relationships that others struggle with. Create alliances with colleagues who complement your strengths, forming partnerships where you handle relationship management while they focus on technical execution. Remember that being supportive doesn't mean being submissive—you can advocate for yourself while still maintaining your collaborative values.

When should I prioritize harmony versus addressing conflicts directly?

Use harmony as a tool for productivity, not as an avoidance mechanism. Address conflicts directly when they impact team performance, violate professional boundaries, or prevent important decisions from being made. However, not every disagreement needs confrontation—your ability to find common ground is valuable when the conflict is about preferences rather than principles. The key is distinguishing between healthy debate that leads to better outcomes and toxic dynamics that need intervention. When you do address conflicts, frame them as opportunities for growth rather than personal attacks, using your diplomatic skills to facilitate difficult conversations that others might avoid. Your strength lies in making tough discussions productive rather than avoiding them entirely.

TIP FOR YOU

Your greatest professional power emerges when you transform potential conflicts into collaborative solutions, proving that harmony and progress aren't opposites but partners in sustainable success.

Destiny Number

MEANING

The Destiny Number, or Expression Number, is calculated from the numerical values assigned to the letters in one's full birth name. It reveals the inherent talents, potential challenges, and the overall purpose or destiny of an individual.

How to Calculate

Assign each letter in the full birth name a number from the Pythagorean chart and reduce to a single digit

$A(1)+N(5)+A(1)+N(5)+D(4)+K(2)+U(6)+M(4)+A(1)+R(2) = 31$, Then 4

Unveiling the Power of Destiny Number 4

When Destiny Number 4 anchors your professional foundation, structure becomes your greatest asset. You're the person who transforms ambitious visions into concrete realities, building systems that others can depend on. Your career isn't about flashy moves—it's about creating lasting value through meticulous planning and reliable execution. Colleagues know they can count on you because you deliver results with the precision of a master craftsman. Your professional strength doesn't come from speed, but from the unwavering consistency that turns good ideas into great achievements.

Riding the Wave of Number 4 in Your Professional Life

Your workday operates like a well-oiled machine where every component has its place and purpose. You approach each project with the mindset of an architect—understanding that strong foundations support everything that follows. Team members appreciate your systematic approach because it eliminates guesswork and creates clear pathways to success. Your professional environment benefits from your presence because you're the one who ensures deadlines are met, details are handled, and quality standards are maintained. While your methodical nature brings stability, remember that sometimes the most innovative solutions emerge when you allow yourself to explore beyond established procedures.

Personalized Portrayal of Destiny Number 4's Influence

Your professional journey follows the blueprint of a master builder—each step carefully planned, each structure designed to last. You don't chase trends; you create systems that become the backbone of successful organizations. Your natural ability to see how pieces fit together makes you invaluable in roles where precision and reliability matter most. The industries that need people who can turn chaos into order, plans into reality, and ideas into functioning systems are where you'll find your greatest impact. The challenge ahead involves recognizing when established methods need updating, allowing innovation to enhance your systematic approach rather than replace it.

What makes my systematic approach valuable in fast-changing industries?

In rapidly evolving industries, your ability to create structure becomes even more valuable because chaos needs order. Technology companies scaling quickly need people who can build reliable systems that can handle growth. Startups transitioning to established businesses require your skills to transform ad-hoc processes into sustainable operations. Your systematic approach provides the stability that allows innovation to flourish—you're the foundation that enables others to experiment safely. Industries undergoing digital transformation particularly value professionals who can build new structures while maintaining operational continuity. Your reliability isn't a limitation in fast-changing environments—it's the anchor that prevents organizations from spinning out of control during periods of rapid growth or change.


How can I introduce innovation into my structured work approach without losing reliability?

Treat innovation as a structured process rather than random experimentation. Create "innovation frameworks" that allow for creative exploration within defined parameters. Set aside dedicated time for evaluating new methods, but do so systematically—test innovations in controlled environments before implementing them broadly. Build feedback loops into your processes so you can continuously improve without sacrificing reliability. Partner with more creative colleagues who can bring fresh ideas, while you provide the structure needed to make those ideas actionable. Remember that the best innovations often come from systematically improving existing processes rather than completely replacing them. Your strength lies in making innovation sustainable and repeatable, not just exciting.

What professional situations require me to step outside my comfort zone of structure?

You'll need flexibility when entering new industries where established processes don't exist yet, or when working with highly creative teams that require more fluid structures. Situations requiring rapid pivots—like crisis management or market disruptions—demand your ability to create structure on the fly rather than following existing frameworks. When collaborating with innovators who work in iterative, experimental ways, you'll need to adapt your systematic approach to support their process rather than forcing them into rigid structures. The key is recognizing that structure should serve the goal, not the other way around. Sometimes the most systematic approach is to create flexible frameworks that can adapt to changing circumstances while maintaining core principles of reliability and quality.

TIP FOR YOU

Your greatest professional contribution comes when you build systems so reliable that others  can innovate freely within them, knowing the foundation you've created will support their creative risks.

Soul Urge Number

MEANING

The Soul Urge Number, or Heart's Desire Number, is derived from the vowels in a person's full birth name. It reflects the innermost desires, emotional needs, and core values that drive an individual at a soul level.

How to Calculate

Sum the vowels in the full birth name and reduce to a single digit

$$A(1)+A(1)+U(6)+A(1) = 9$$

Significance of the Soul Urge Number 9

Soul Urge Number 9 infuses your professional world with a sense of purpose that extends far beyond personal gain. Your career becomes a vehicle for positive change, where success is measured not just in achievements, but in the impact you have on others' lives. You're the person who sees the bigger picture, understanding that professional fulfillment comes from contributing to something larger than yourself. Colleagues are inspired by your dedication to meaningful work because you demonstrate that careers can be both successful and significant. Your professional strength emerges from your ability to connect with others' needs, inspire transformation, and create environments where everyone can grow and contribute.

Practical Implications of the Soul Urge Number 9

Your workday centers around making a difference, each task an opportunity to contribute to something meaningful. You approach projects with the understanding that your work has the power to transform lives, communities, and even industries. Team members value your presence because you bring a sense of purpose to everything you do, reminding others that professional success can align with making the world a better place. Your professional environment benefits from your influence because you're the person who ensures that values, ethics, and positive impact remain central to decision-making. While your humanitarian approach creates meaningful work, remember that sustainable impact requires you to also care for yourself, ensuring you have the energy and resources to continue making a difference.

Personalized Insight of the Soul Urge Number 9

Your professional journey unfolds as a series of contributions to the greater good, where each achievement serves a purpose beyond personal advancement. You've developed an ability to see how your work connects to larger movements, understanding that meaningful careers are built on making a positive difference. Your career isn't about accumulating wealth or status—it's about creating impact, inspiring change, and leaving a legacy of positive transformation. The industries that need people who can combine professional excellence with humanitarian values, who can build successful enterprises while serving the greater good, are where you'll find your deepest fulfillment. The path ahead involves learning to balance your desire to help others with the self-care needed to sustain your ability to make a lasting impact.

How can I create meaningful impact at scale without burning out?

Focus on creating systems and structures that enable impact rather than trying to help everyone individually. Build programs, processes, or platforms that can serve many people without requiring your direct involvement in each case. Develop others who can carry forward your mission, multiplying your impact through their work. Use your strategic thinking to identify leverage points where small interventions can create large-scale change. Remember that sustainable impact requires sustainable practices—you can't help others effectively if you're depleted. Frame self-care as essential for maintaining your ability to serve, not as selfishness. The most effective change-makers build systems that create lasting transformation, not just temporary assistance.


How do I balance my desire to serve with the need to advance my own career?

Recognize that career advancement amplifies your ability to serve rather than competing with it. As you move into leadership roles, you gain the ability to create policies, build programs, and influence culture in ways that help many more people than you could individually. Frame your career growth as expanding your platform for impact—you're not abandoning service, you're scaling it. Seek opportunities where professional success and positive impact align, such as social enterprises, impact-driven companies, or leadership roles in mission-driven organizations. Remember that the most effective way to help others long-term is to ensure you're in a position where you can make decisions that create systemic change. Your advancement becomes a tool for greater service, not a departure from your values.

What professional boundaries should I set to prevent my helpful nature from being exploited?

Establish clear criteria for when and how you'll help, ensuring your assistance serves your mission rather than just individual requests. Set limits on the time and energy you dedicate to helping others, treating it as a strategic resource allocation rather than an unlimited supply. Learn to distinguish between helping that creates dependency versus helping that empowers others to help themselves. Say no to requests that don't align with your values or that would prevent you from serving your primary mission effectively. Create systems that allow you to help many people efficiently rather than being overwhelmed by individual requests. Remember that saying no to some requests enables you to say yes to more impactful opportunities. Your helpfulness is a strength, but it should be directed strategically toward creating the greatest positive impact.

TIP FOR YOU

 *Your greatest professional legacy will be measured not in the number of people you helped directly, but in the systems you built and the leaders you developed who continue creating positive change long after your direct involvement, ensuring your impact multiplies and endures.*

Personality Number

MEANING

The Personality Number, calculated from the consonants in your full birth name, describes the outer mask you wear — how others first perceive you in social and romantic situations.

How to Calculate

Sum the consonants in the full birth name and reduce to a single digit

$N(5)+N(5)+D(4)+K(2)+M(4)+R(2) = 22$, Then 4

Unveiling the Power of Personality Number 4

When Personality Number 4 anchors your professional foundation, structure becomes your greatest asset. You're the person who transforms ambitious visions into concrete realities, building systems that others can depend on. Your career isn't about flashy moves—it's about creating lasting value through meticulous planning and reliable execution. Colleagues know they can count on you because you deliver results with the precision of a master craftsman. Your professional strength doesn't come from speed, but from the unwavering consistency that turns good ideas into great achievements.

Interpreting the Everyday Impact of Personality Number 4

Your workday operates like a well-oiled machine where every component has its place and purpose. You approach each project with the mindset of an architect—understanding that strong foundations support everything that follows. Team members appreciate your systematic approach because it eliminates guesswork and creates clear pathways to success. Your professional environment benefits from your presence because you're the one who ensures deadlines are met, details are handled, and quality standards are maintained. While your methodical nature brings stability, remember that sometimes the most innovative solutions emerge when you allow yourself to explore beyond established procedures.

Unique Interpretations of Personality Number 4

Your professional journey follows the blueprint of a master builder—each step carefully planned, each structure designed to last. You don't chase trends; you create systems that become the backbone of successful organizations. Your natural ability to see how pieces fit together makes you invaluable in roles where precision and reliability matter most. The industries that need people who can turn chaos into order, plans into reality, and ideas into functioning systems are where you'll find your greatest impact. The challenge ahead involves recognizing when established methods need updating, allowing innovation to enhance your systematic approach rather than replace it.

What makes my systematic approach valuable in fast-changing industries?

In rapidly evolving industries, your ability to create structure becomes even more valuable because chaos needs order. Technology companies scaling quickly need people who can build reliable systems that can handle growth. Startups transitioning to established businesses require your skills to transform ad-hoc processes into sustainable operations. Your systematic approach provides the stability that allows innovation to flourish—you're the foundation that enables others to experiment safely. Industries undergoing digital transformation particularly value professionals who can build new structures while maintaining operational continuity. Your reliability isn't a limitation in fast-changing environments—it's the anchor that prevents organizations from spinning out of control during periods of rapid growth or change.

How can I introduce innovation into my structured work approach without losing reliability?

Treat innovation as a structured process rather than random experimentation. Create "innovation frameworks" that allow for creative exploration within defined parameters. Set aside dedicated time for evaluating new methods, but do so systematically—test innovations in controlled environments before implementing them broadly. Build feedback loops into your processes so you can continuously improve without sacrificing reliability. Partner with more creative colleagues who can bring fresh ideas, while you provide the structure needed to make those ideas actionable. Remember that the best innovations often come from systematically improving existing processes rather than completely replacing them. Your strength lies in making innovation sustainable and repeatable, not just exciting.

What professional situations require me to step outside my comfort zone of structure?

You'll need flexibility when entering new industries where established processes don't exist yet, or when working with highly creative teams that require more fluid structures. Situations requiring rapid pivots—like crisis management or market disruptions—demand your ability to create structure on the fly rather than following existing frameworks. When collaborating with innovators who work in iterative, experimental ways, you'll need to adapt your systematic approach to support their process rather than forcing them into rigid structures. The key is recognizing that structure should serve the goal, not the other way around. Sometimes the most systematic approach is to create flexible frameworks that can adapt to changing circumstances while maintaining core principles of reliability and quality.

TIP FOR YOU

Your greatest professional contribution comes when you build systems so reliable that others can innovate freely within them, knowing the foundation you've created will support their creative risks.

Birthday Number

MEANING

The Birthday Number is derived from the day of birth and reflects personal talents and natural abilities that influence your approach to professional development and career growth.

How to Calculate

Simply the day you were born, reduced to a single digit

$$29 = 11$$

Unveiling the Power of Birthday Number 2

When Birthday Number 2 shapes your professional world, collaboration becomes your superpower. You don't just work with people—you create bridges between different perspectives, turning potential conflicts into opportunities for growth. Your career thrives in environments where teamwork matters more than individual achievement, and your natural ability to read between the lines makes you exceptional at understanding what colleagues really need. The professional landscape rewards those who can unite diverse talents, and that's exactly where you excel.

Interpreting the Everyday Impact of Birthday Number 2

Your workday unfolds through a lens of empathy and understanding that transforms ordinary interactions into meaningful connections. Colleagues gravitate toward you because you listen not just to words, but to the emotions and intentions behind them. This sensitivity allows you to navigate office politics with grace, often preventing misunderstandings before they escalate. Your professional environment benefits from your presence because you're the person who notices when someone needs support, even before they ask. While your harmonious approach creates positive dynamics, remember that sometimes professional growth requires having difficult conversations that can't be smoothed over.

Unique Interpretations of Birthday Number 2

Your professional journey follows a rhythm of partnership and mutual support that sets you apart in competitive environments. You've mastered the art of making others feel valued, which in turn makes you indispensable to any team. Your career path isn't about climbing over others—it's about lifting everyone together, creating a rising tide that benefits all. This collaborative philosophy often leads to opportunities that wouldn't exist in purely competitive settings. The challenge ahead involves learning when to prioritize your own advancement without feeling guilty about pursuing your professional goals.

What types of work environments allow my collaborative nature to thrive?

Environments that prioritize team success over individual achievement are your natural habitat. Look for organizations with flat hierarchies where cross-functional collaboration is essential—startups scaling their operations, design agencies requiring creative partnerships, and healthcare settings where patient outcomes depend on coordinated care teams. Educational institutions and nonprofit organizations also value your ability to build consensus and create inclusive environments. Avoid highly competitive, cutthroat cultures where collaboration is seen as weakness rather than strength. Your ideal workplace celebrates diverse perspectives and recognizes that the best solutions emerge from collective intelligence.

How can I leverage my diplomatic skills without sacrificing my own career advancement?

Frame your collaborative approach as a strategic advantage rather than a passive trait. Document how your ability to build partnerships has directly contributed to project success—quantify the value you bring through conflict resolution, team cohesion, and stakeholder alignment. When negotiating for promotions or raises, emphasize how your diplomatic skills enable you to manage complex relationships that others struggle with. Create alliances with colleagues who complement your strengths, forming partnerships where you handle relationship management while they focus on technical execution. Remember that being supportive doesn't mean being submissive—you can advocate for yourself while still maintaining your collaborative values.

When should I prioritize harmony versus addressing conflicts directly?

Use harmony as a tool for productivity, not as an avoidance mechanism. Address conflicts directly when they impact team performance, violate professional boundaries, or prevent important decisions from being made. However, not every disagreement needs confrontation—your ability to find common ground is valuable when the conflict is about preferences rather than principles. The key is distinguishing between healthy debate that leads to better outcomes and toxic dynamics that need intervention. When you do address conflicts, frame them as opportunities for growth rather than personal attacks, using your diplomatic skills to facilitate difficult conversations that others might avoid. Your strength lies in making tough discussions productive rather than avoiding them entirely.

TIP FOR YOU

Your greatest professional power emerges when you transform potential conflicts into collaborative solutions, proving that harmony and progress aren't opposites but partners in sustainable success.

Attitude Number

MEANING

The Attitude Number, calculated from the month and day of birth, reveals how you approach professional life and career challenges — your day-to-day response pattern and immediate temperament in workplace situations.

How to Calculate

Add the month and day of birth and reduce to a single digit

$8+29 = 37$, Then $10 = 1$

Unveiling the Power of Attitude Number 1

Leadership flows naturally through your professional DNA when Attitude Number 1 guides your journey. Your career isn't just a job—it's a platform where your strategic vision and organizational mastery shine. Colleagues recognize your ability to transform chaos into structured success, making you the go-to person when complex projects need direction. Your professional strength emerges from combining disciplined execution with inspiring others to reach their potential.

Interpreting the Everyday Impact of Attitude Number 1

In the workplace, your presence commands respect without demanding it. You approach each task with a methodical precision that transforms ambitious goals into achievable milestones. Team members naturally look to you for guidance because you don't just manage—you elevate everyone around you. Your professional environment thrives under your systematic approach, creating a culture where excellence becomes the standard rather than the exception. While your structured mindset brings stability, remember that innovation often requires stepping outside established frameworks.

Unique Interpretations of Attitude Number 1

Your professional trajectory follows a pattern of calculated advancement where every decision serves a larger strategic purpose. You don't chase opportunities—you create them by building systems that others can rely on. Your natural talent lies in seeing the bigger picture while managing intricate details, making you invaluable in executive roles where vision meets execution. The path ahead requires balancing your preference for proven methods with the courage to pioneer new approaches when circumstances demand innovation.

Which industries naturally align with my leadership-driven professional approach?

Industries that reward strategic vision and systematic execution are where you'll find your natural fit. Technology companies seeking to scale, consulting firms that solve complex organizational challenges, and financial institutions requiring disciplined risk management all value your ability to see the bigger picture while managing intricate details. Manufacturing and logistics sectors also appreciate leaders who can transform operational chaos into streamlined efficiency. Your systematic approach makes you particularly valuable in roles where long-term planning meets immediate execution needs.


How should I approach career transitions to maximize my strategic strengths?

When considering career moves, evaluate opportunities through the lens of strategic impact rather than immediate gains. Look for roles where you can build systems and processes that will outlast your tenure—your legacy isn't just in what you achieve, but in the infrastructure you create for others to succeed. Before making transitions, map out how each potential move connects to your long-term vision. Seek positions that allow you to combine your natural leadership with opportunities to mentor and develop others, as your greatest professional satisfaction comes from creating sustainable success frameworks.

What professional blind spots should I be aware of as a natural leader?

Your greatest strength—systematic thinking—can become a limitation when it prevents you from recognizing when established processes need disruption. You might miss innovative opportunities because they don't fit your proven frameworks. Additionally, your preference for structured environments could make you uncomfortable in fast-moving, experimental settings where rapid pivots are necessary. Be mindful of becoming so focused on perfecting systems that you delay action—sometimes good enough executed quickly beats perfect executed slowly. Also watch for tendencies to micromanage when you should delegate, as your high standards can sometimes limit others' growth opportunities.

TIP FOR YOU

 *True leadership mastery emerges when you learn to build systems that empower others to lead, creating a multiplier effect that extends your impact far beyond your direct reach.*

Maturity Number

MEANING

The Maturity Number, calculated from Life Path + Destiny, emerges in later life and shows the qualities you'll develop with age, particularly in how you approach and maintain your professional career.

How to Calculate

The sum of the Life Path Number and the Destiny Number reduced to a single digit
Life Path Number(2) + Destiny Number(4), $2+4 = 6 = 6$

Unveiling the Power of Maturity Number 6

Maturity Number 6 weaves a thread of care and responsibility through every aspect of your professional life. Your career isn't just about personal achievement—it's about creating environments where everyone can thrive. You're the person colleagues turn to when they need guidance, support, or simply someone who understands. Your professional strength doesn't come from competition, but from your ability to lift others up, creating a culture of mutual support that benefits everyone. Industries that value people over profits, growth over greed, and collaboration over competition are where you'll find your true calling.

Interpreting the Everyday Impact of Maturity Number 6

Your workday centers around connection and contribution, each interaction an opportunity to make someone's professional journey a little easier. You notice when colleagues are struggling, when teams need cohesion, and when the work environment could benefit from more support. People gravitate toward you because you create spaces where they feel safe to grow, make mistakes, and learn. Your professional environment transforms under your influence because you're the person who remembers that behind every project, there are people with hopes, challenges, and dreams. While your caring nature creates positive dynamics, remember that sustainable support requires you to also care for yourself, ensuring you have the energy to continue helping others.

Unique Interpretations of Maturity Number 6

Your professional path unfolds as a series of meaningful connections and contributions that extend far beyond individual achievement. You've mastered the art of creating environments where people feel valued, supported, and empowered to reach their potential. Your career isn't about climbing over others—it's about building bridges that help everyone cross together. The industries that need people who understand that success is measured not just in profits, but in the positive impact on others' lives, are where you'll find your greatest fulfillment. The journey ahead involves learning to balance your natural desire to help others with the self-care needed to sustain your ability to make a difference.

How do I demonstrate the business value of my people-focused approach?

Quantify the impact of your people-focused work by connecting it to business outcomes. Track metrics like reduced turnover rates, improved team productivity, increased employee engagement scores, or faster project completion when teams work harmoniously. Document how your ability to create supportive environments has directly contributed to retention, collaboration, and overall team performance. Frame your nurturing approach as a strategic advantage that reduces costs (less turnover, fewer conflicts) while increasing productivity (better collaboration, higher morale). When presenting your value, emphasize how your people skills enable others to perform better, making you a force multiplier rather than just a supportive colleague.

What boundaries should I set to prevent my helpful nature from being exploited?

Establish clear professional boundaries by defining what support you can provide within your role versus what falls outside your responsibilities. Set time limits for helping others—for example, dedicating specific hours for mentoring or support rather than being available 24/7. Learn to say no gracefully by redirecting requests to appropriate resources or suggesting alternative solutions. Create systems that prevent you from taking on others' work—if someone needs help, guide them to solve it themselves rather than doing it for them. Most importantly, recognize that saying no to unreasonable requests isn't being unhelpful—it's being professional. Your caring nature is a strength, but it should serve your career goals, not derail them.

How can I advance my career while maintaining my commitment to helping others?

View career advancement as a way to help more people on a larger scale rather than abandoning your caring nature. As you move up, you can create systems and policies that support others, mentor more people, and influence organizational culture in ways that benefit everyone. Frame your advancement as enabling you to have greater impact—you're not leaving your values behind, you're amplifying them. Seek leadership roles where your people-focused approach is valued and where you can create environments that support others' growth. Remember that the most effective way to help others long-term is to ensure you're in a position where you can make meaningful decisions that affect their professional lives positively.

TIP FOR YOU

Your greatest professional legacy won't be in the tasks you complete, but in the people you empower—creating a ripple effect where those you've supported go on to support others, multiplying your impact far beyond your direct reach.

Balance Number

MEANING

The Balance Number, often derived from differences between consonant and vowel totals in your name, indicates how you maintain equilibrium in stress or choice situations, particularly in professional and career decisions.

How to Calculate

The difference between consonant and vowel totals reduced to a single digit
Consonants(22) - Vowels(9) = 13, Then 4

Unveiling the Power of Balance Number 4

When Balance Number 4 anchors your professional foundation, structure becomes your greatest asset. You're the person who transforms ambitious visions into concrete realities, building systems that others can depend on. Your career isn't about flashy moves—it's about creating lasting value through meticulous planning and reliable execution. Colleagues know they can count on you because you deliver results with the precision of a master craftsman. Your professional strength doesn't come from speed, but from the unwavering consistency that turns good ideas into great achievements.

Interpreting the Everyday Impact of Balance Number 4

Your workday operates like a well-oiled machine where every component has its place and purpose. You approach each project with the mindset of an architect—understanding that strong foundations support everything that follows. Team members appreciate your systematic approach because it eliminates guesswork and creates clear pathways to success. Your professional environment benefits from your presence because you're the one who ensures deadlines are met, details are handled, and quality standards are maintained. While your methodical nature brings stability, remember that sometimes the most innovative solutions emerge when you allow yourself to explore beyond established procedures.

Unique Interpretations of Balance Number 4

Your professional journey follows the blueprint of a master builder—each step carefully planned, each structure designed to last. You don't chase trends; you create systems that become the backbone of successful organizations. Your natural ability to see how pieces fit together makes you invaluable in roles where precision and reliability matter most. The industries that need people who can turn chaos into order, plans into reality, and ideas into functioning systems are where you'll find your greatest impact. The challenge ahead involves recognizing when established methods need updating, allowing innovation to enhance your systematic approach rather than replace it.

What makes my systematic approach valuable in fast-changing industries?

In rapidly evolving industries, your ability to create structure becomes even more valuable because chaos needs order. Technology companies scaling quickly need people who can build reliable systems that can handle growth. Startups transitioning to established businesses require your skills to transform ad-hoc processes into sustainable operations. Your systematic approach provides the stability that allows innovation to flourish—you're the foundation that enables others to experiment safely. Industries undergoing digital transformation particularly value professionals who can build new structures while maintaining operational continuity. Your reliability isn't a limitation in fast-changing environments—it's the anchor that prevents organizations from spinning out of control during periods of rapid growth or change.


How can I introduce innovation into my structured work approach without losing reliability?

Treat innovation as a structured process rather than random experimentation. Create "innovation frameworks" that allow for creative exploration within defined parameters. Set aside dedicated time for evaluating new methods, but do so systematically—test innovations in controlled environments before implementing them broadly. Build feedback loops into your processes so you can continuously improve without sacrificing reliability. Partner with more creative colleagues who can bring fresh ideas, while you provide the structure needed to make those ideas actionable. Remember that the best innovations often come from systematically improving existing processes rather than completely replacing them. Your strength lies in making innovation sustainable and repeatable, not just exciting.

What professional situations require me to step outside my comfort zone of structure?

You'll need flexibility when entering new industries where established processes don't exist yet, or when working with highly creative teams that require more fluid structures. Situations requiring rapid pivots—like crisis management or market disruptions—demand your ability to create structure on the fly rather than following existing frameworks. When collaborating with innovators who work in iterative, experimental ways, you'll need to adapt your systematic approach to support their process rather than forcing them into rigid structures. The key is recognizing that structure should serve the goal, not the other way around. Sometimes the most systematic approach is to create flexible frameworks that can adapt to changing circumstances while maintaining core principles of reliability and quality.

TIP FOR YOU

Your greatest professional contribution comes when you build systems so reliable that others  can innovate freely within them, knowing the foundation you've created will support their creative risks.

Subconscious Self Number

MEANING

The Subconscious Self Number is derived from counting the distinct Chaldean numerical values present in one's birth name. It reflects the hidden qualities and traits that operate beneath conscious awareness, influencing behavior and professional patterns in subtle ways.

How to Calculate

Count the distinct Chaldean values in the full birth name and reduce to a single digit if needed

Distinct values: 1, 2, 4, 5, 6 = 5

Unlocking the Power of Subconscious Self Number 5

Subconscious Self Number 5 infuses your professional world with an energy that refuses to be contained. Your career thrives on movement, change, and the thrill of discovering what's next. You're not the type to settle into predictable routines—instead, you're the person who sees opportunity where others see obstacles. Colleagues are drawn to your dynamic presence because you bring fresh energy to every project, turning mundane tasks into exciting challenges. Your professional strength emerges from your ability to pivot quickly, adapt to new situations, and find creative solutions when traditional approaches fall short.

The Professional Blueprint of Subconscious Self Number 5

Your workday pulses with variety and possibility, each moment offering a chance to explore something new. You approach tasks with the curiosity of an explorer, always looking for the next interesting challenge or unexpected opportunity. Team members value your ability to think outside the box because you naturally see connections and possibilities that others miss. Your professional environment benefits from your presence because you're the catalyst that transforms stagnant situations into dynamic ones. While your love for variety keeps things exciting, remember that some of the most rewarding professional achievements come from seeing projects through to completion, not just starting them.

Personalized Tremors of Subconscious Self Number 5

Your professional trajectory moves like a river—always flowing, always finding new paths, never staying in one place too long. You've mastered the art of turning change into advantage, which makes you invaluable in industries that evolve rapidly. Your career isn't about climbing a single ladder—it's about exploring multiple paths, each one teaching you something new about your capabilities. The challenge ahead involves learning to balance your natural restlessness with the commitment needed to build lasting professional achievements, recognizing that some opportunities are worth staying with long enough to see them fully develop.

How do I find roles that satisfy my need for variety without appearing unfocused?

Look for roles where variety is built into the job structure rather than something you create yourself. Sales roles with different clients and territories, consulting projects that change every few months, or content creation where each piece is unique all offer natural variety. Project-based work in agencies or freelance arrangements allow you to experience different industries and challenges while maintaining professional credibility. The key is framing your diverse experience as strategic breadth rather than lack of focus—you're someone who brings fresh perspectives from multiple domains. When interviewing, emphasize how your varied background makes you uniquely qualified to solve problems that require cross-functional thinking.

What strategies help me commit to longer-term projects while maintaining my sense of adventure?

Break long-term projects into phases that each feel like separate adventures. Treat each milestone as a new challenge rather than just a continuation of the previous one. Find ways to inject variety within the project—take on different aspects, work with different team members, or approach each phase with a fresh perspective. Set intermediate goals that give you a sense of completion and progress, satisfying your need for movement while maintaining commitment. You can also maintain variety by working on multiple projects simultaneously, each at different stages, so you're always experiencing something new while still seeing things through. The key is recognizing that commitment doesn't mean monotony—you can be deeply committed while still finding ways to keep the journey interesting.

How can I leverage my adaptability as a competitive advantage in my career?

Position your adaptability as a strategic asset that enables you to thrive in uncertain environments where others struggle. Highlight specific examples of how you've successfully navigated industry changes, market shifts, or organizational transitions. Emphasize your ability to quickly learn new skills and pivot when circumstances change—this is increasingly valuable in fast-moving industries. Frame your varied experience as evidence of your ability to adapt and learn quickly, making you valuable in roles that require flexibility. When opportunities arise in emerging fields or during times of change, position yourself as someone who can hit the ground running because you're comfortable with uncertainty. Your adaptability isn't a lack of focus—it's a superpower in an ever-changing professional landscape.

TIP FOR YOU

Your ability to thrive in change becomes your greatest asset when you learn to channel your restless energy into projects that matter, creating a portfolio of diverse achievements that tell a story of strategic versatility rather than scattered focus.

Reality Number

MEANING

The Reality Number, or Quiescent Self Number, is derived from the sum of the consonants in one's birth name. It reflects the qualities and traits that are likely to become more apparent and influential as a person matures.

How to Calculate

The sum of the Life Path Number and the Destiny Number reduced to a single digit
Life Path Number(2) + Destiny Number(4), $2+4 = 6 = 6$

Unlocking the Power of Reality Number 6

Reality Number 6 weaves a thread of care and responsibility through every aspect of your professional life. Your career isn't just about personal achievement—it's about creating environments where everyone can thrive. You're the person colleagues turn to when they need guidance, support, or simply someone who understands. Your professional strength doesn't come from competition, but from your ability to lift others up, creating a culture of mutual support that benefits everyone. Industries that value people over profits, growth over greed, and collaboration over competition are where you'll find your true calling.

The Professional Blueprint of Reality Number 6

Your workday centers around connection and contribution, each interaction an opportunity to make someone's professional journey a little easier. You notice when colleagues are struggling, when teams need cohesion, and when the work environment could benefit from more support. People gravitate toward you because you create spaces where they feel safe to grow, make mistakes, and learn. Your professional environment transforms under your influence because you're the person who remembers that behind every project, there are people with hopes, challenges, and dreams. While your caring nature creates positive dynamics, remember that sustainable support requires you to also care for yourself, ensuring you have the energy to continue helping others.

Personalized Tremors of Reality Number 6

Your professional path unfolds as a series of meaningful connections and contributions that extend far beyond individual achievement. You've mastered the art of creating environments where people feel valued, supported, and empowered to reach their potential. Your career isn't about climbing over others—it's about building bridges that help everyone cross together. The industries that need people who understand that success is measured not just in profits, but in the positive impact on others' lives, are where you'll find your greatest fulfillment. The journey ahead involves learning to balance your natural desire to help others with the self-care needed to sustain your ability to make a difference.

How do I demonstrate the business value of my people-focused approach?

Quantify the impact of your people-focused work by connecting it to business outcomes. Track metrics like reduced turnover rates, improved team productivity, increased employee engagement scores, or faster project completion when teams work harmoniously. Document how your ability to create supportive environments has directly contributed to retention, collaboration, and overall team performance. Frame your nurturing approach as a strategic advantage that reduces costs (less turnover, fewer conflicts) while increasing productivity (better collaboration, higher morale). When presenting your value, emphasize how your people skills enable others to perform better, making you a force multiplier rather than just a supportive colleague.

What boundaries should I set to prevent my helpful nature from being exploited?

Establish clear professional boundaries by defining what support you can provide within your role versus what falls outside your responsibilities. Set time limits for helping others—for example, dedicating specific hours for mentoring or support rather than being available 24/7. Learn to say no gracefully by redirecting requests to appropriate resources or suggesting alternative solutions. Create systems that prevent you from taking on others' work—if someone needs help, guide them to solve it themselves rather than doing it for them. Most importantly, recognize that saying no to unreasonable requests isn't being unhelpful—it's being professional. Your caring nature is a strength, but it should serve your career goals, not derail them.

How can I advance my career while maintaining my commitment to helping others?

View career advancement as a way to help more people on a larger scale rather than abandoning your caring nature. As you move up, you can create systems and policies that support others, mentor more people, and influence organizational culture in ways that benefit everyone. Frame your advancement as enabling you to have greater impact—you're not leaving your values behind, you're amplifying them. Seek leadership roles where your people-focused approach is valued and where you can create environments that support others' growth. Remember that the most effective way to help others long-term is to ensure you're in a position where you can make meaningful decisions that affect their professional lives positively.

TIP FOR YOU

Your greatest professional legacy won't be in the tasks you complete, but in the people you empower—creating a ripple effect where those you've supported go on to support others, multiplying your impact far beyond your direct reach.

Sun Number

MEANING

The Sun Number is determined by reducing the birth date to a single digit and provides insights into the core aspects of an individual's personality, representing the essence of who they are at their core.

How to Calculate

Add the month and day of birth and reduce to a single digit

$8+29 = 37$, Then $3+7 = 10$, Then $1+0 = 1$

Significance of the Sun Number 1

Leadership flows naturally through your professional DNA when Sun Number 1 guides your journey. Your career isn't just a job—it's a platform where your strategic vision and organizational mastery shine. Colleagues recognize your ability to transform chaos into structured success, making you the go-to person when complex projects need direction. Your professional strength emerges from combining disciplined execution with inspiring others to reach their potential.

Practical Implications of the Sun Number 1

In the workplace, your presence commands respect without demanding it. You approach each task with a methodical precision that transforms ambitious goals into achievable milestones. Team members naturally look to you for guidance because you don't just manage—you elevate everyone around you. Your professional environment thrives under your systematic approach, creating a culture where excellence becomes the standard rather than the exception. While your structured mindset brings stability, remember that innovation often requires stepping outside established frameworks.

Personalized Insight of the Sun Number 1

Your professional trajectory follows a pattern of calculated advancement where every decision serves a larger strategic purpose. You don't chase opportunities—you create them by building systems that others can rely on. Your natural talent lies in seeing the bigger picture while managing intricate details, making you invaluable in executive roles where vision meets execution. The path ahead requires balancing your preference for proven methods with the courage to pioneer new approaches when circumstances demand innovation.

Which industries naturally align with my leadership-driven professional approach?

Industries that reward strategic vision and systematic execution are where you'll find your natural fit. Technology companies seeking to scale, consulting firms that solve complex organizational challenges, and financial institutions requiring disciplined risk management all value your ability to see the bigger picture while managing intricate details. Manufacturing and logistics sectors also appreciate leaders who can transform operational chaos into streamlined efficiency. Your systematic approach makes you particularly valuable in roles where long-term planning meets immediate execution needs.


How should I approach career transitions to maximize my strategic strengths?

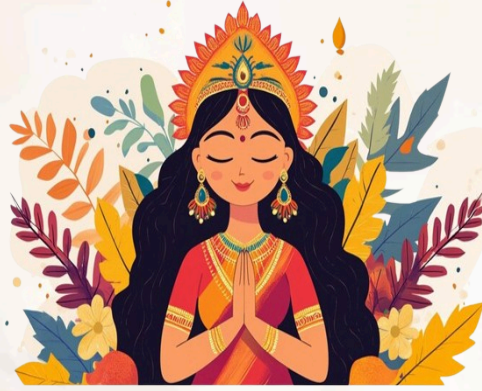
When considering career moves, evaluate opportunities through the lens of strategic impact rather than immediate gains. Look for roles where you can build systems and processes that will outlast your tenure—your legacy isn't just in what you achieve, but in the infrastructure you create for others to succeed. Before making transitions, map out how each potential move connects to your long-term vision. Seek positions that allow you to combine your natural leadership with opportunities to mentor and develop others, as your greatest professional satisfaction comes from creating sustainable success frameworks.

What professional blind spots should I be aware of as a natural leader?

Your greatest strength—systematic thinking—can become a limitation when it prevents you from recognizing when established processes need disruption. You might miss innovative opportunities because they don't fit your proven frameworks. Additionally, your preference for structured environments could make you uncomfortable in fast-moving, experimental settings where rapid pivots are necessary. Be mindful of becoming so focused on perfecting systems that you delay action—sometimes good enough executed quickly beats perfect executed slowly. Also watch for tendencies to micromanage when you should delegate, as your high standards can sometimes limit others' growth opportunities.

TIP FOR YOU

 *True leadership mastery emerges when you learn to build systems that empower others to lead, creating a multiplier effect that extends your impact far beyond your direct reach.*



Thank You



JYOTISHAM
ASTRO API

For Any Inquiries Please Contact

Synilogic Tech Private Limited
C-7, Santosh Nagar-1, Borkheda, Kota, India, Rajasthan

www.synilogictech.com

Synilogictech@gmail.com

[919358656189](tel:919358656189)