



|| Shree Ganeshaya Namaha ||

PERSONAL EMPOWERMENT & CONFIDENCE BOOSTERS

Anand Kumar

29/08/2008 23:12

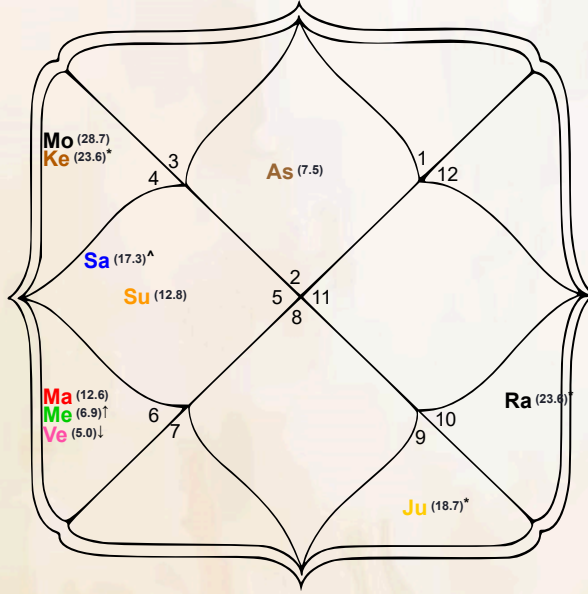
Kota, India

Generated By



JYOTISHAM
ASTRO API

Natal Chart & Planetary Position



Planet	Local Degree	Global Degree	Zodiac	Zodiac Lord	House	Nakshatra	Nakshatra Lord	Avastha
Ascendant	7.492882510995614	37.492882510995614	Taurus	Venus	1	Krittika	Sun	-
Sun	12.763824768542776	132.76382476854278	Leo	Sun	4	Magha	Ketu	Adult (Yuva)
Moon	28.749532040085214	118.74953204008521	Cancer	Moon	3	Ashlesha	Mercury	Extremely old age (Mrita)
Mars	12.628795174994963	162.62879517499496	Virgo	Mercury	5	Hasta	Moon	Adult (Yuva)
Mercury	6.875092968199311	156.8750929681993	Virgo	Mercury	5	U.Phalg	Sun	Youth (Kumara)
Jupiter	18.690636747152098	258.6906367471521	Sagittarius	Jupiter	8	P.Shadha	Venus	Old age (Vridhdha)
Venus	4.952914671378721	154.95291467137872	Virgo	Mercury	5	U.Phalg	Sun	Newborn (Bala)
Saturn	17.26750618169723	137.26750618169723	Leo	Sun	4	P.Phalg	Venus	Adult (Yuva)
Rahu	23.582438262414655	293.58243826241466	Capricorn	Saturn	9	Dhanista	Mars	Old age (Vridhdha)
Ketu	23.582438262414655	113.58243826241466	Cancer	Moon	3	Ashlesha	Mercury	Old age (Vridhdha)

How can astrology boost my confidence and self-esteem?

Based on Anand Kumar's chart, how astrology can boost your confidence and self-esteem analysis is built on 3 key astrological factors. Strong Lagna lord, Sun, Moon, Jupiter, and favorable placements of benefic planets are your core strengths, giving you confidence, self-esteem, and inner strength. When you recognize these strengths, honour them, and translate them into practical steps, you can successfully boost your confidence. This analysis helps you understand which astrological factors can help you increase your confidence.

Strong Sun - Power of Confidence

Your Sun is in a strong position and placed in the 4th house. A strong Sun is your most important strength for confidence and self-esteem. The Sun gives you leadership qualities, a sense of self-worth, and awareness of your rights. When the Sun is strong, you naturally trust your abilities and are able to present yourself confidently to others. Honouring the Sun, offering water to the Sun in the morning, and maintaining your self-respect will further boost your confidence.

Strong Moon - Mental Stability

Your Moon is in a strong position and placed in the 3rd house. A strong Moon is your strength for mental stability and emotional confidence. The Moon governs your mind, emotions, and inner peace. When the Moon is strong, you remain emotionally balanced and are able to express your feelings properly. This gives you inner peace and self-acceptance, which is the foundation of self-esteem. Honouring the Moon, looking at the moon at night, and practicing meditation will increase your mental peace and confidence.

Strong 5th House Lord - Self-Expression

Your 5th house (house of passions) lord Mercury is in a strong position and placed in the 5th house. The strong position of the 5th house lord is your strength for creativity and self-expression, which boosts confidence. It gives you the ability to pursue your interests, do creative work, and express yourself properly. When you understand your creativity and consistently work on your interests, your confidence increases.

What planetary placements indicate self-doubt in my chart?

Based on Anand Kumar's chart, the astrological indicators of self-doubt analysis is built on 4 key factors. A weak Lagna lord, pressure on the Sun and Moon, challenges to the 3rd, 5th, and 11th houses/lords, and the presence of Saturn/Rahu/Ketu in Lagna show in which areas of life you may need to put extra effort into trusting yourself. This analysis helps you see that self-doubt is not just a "personal flaw" but also a karmic/astrological pattern that can be transformed through awareness, remedies, and inner work.

Weak Lagna Lord - Identity-Level Self-Doubt

In your chart, the Lagna (1st house) lord Venus is relatively weak and placed in the 5th house. A weak Lagna lord often points to inner insecurity about one's identity—thoughts like "I am not good enough" or "How are people seeing me?". When the Lagna lord is placed in the 6th, 8th, or 12th house, life circumstances can repeatedly challenge your confidence. This configuration does not mean you will always remain weak, but it does suggest that working consciously on self-acceptance, self-respect, and understanding your true nature will gradually heal this self-doubt.

3rd House/Lord Pressure - Doubts in Initiative

In your chart, the 3rd house (courage, initiative) or its lord Moon shows challenging influences, especially due to its placement in the 3rd house or affliction by malefics. This can indicate that whenever you try to take new steps, take risks, or assert yourself, inner hesitation and thoughts like "Will I be able to do this?" tend to arise. By choosing small, practical actions every day and consciously practicing courage, you can gradually change this pattern and reduce self-doubt around taking initiative.

5th House/Lord Pressure - Doubts in Decisions

In your chart, the 5th house (discrimination, self-expression, intelligence) or its lord Mercury shows pressure or weakness, especially due to its placement in the 5th house or affliction by malefics. This often indicates hesitation in trusting your own decisions, judgement, or talents—thoughts like "What if I make a mistake?" can fuel self-doubt. By gradually taking small decisions on your own, giving space to your creativity, and consciously remembering your successful experiences, you can reduce this pattern of doubt.

11th House/Lord Pressure - Doubts About Success

In your chart, the 11th house (gains, fulfillment) or its lord Jupiter shows pressure or weakness, especially due to its placement in the 8th house or affliction by malefics. When the 11th house is under such pressure, results of efforts may come late or not as expected, which over time can create self-doubt like "Will my efforts ever succeed?". This configuration teaches you to focus more on inner growth and sincere effort rather than only external validation; when you become process-oriented, your confidence gradually returns.

What astrological aspects support courageous actions in my life?

This courage & fearlessness analysis for Anand Kumar is built on 3 key factors—strength of Lagna/3rd/6th/10th, power of Mars-Sun-Jupiter, and benefics in 1/3/6/10. It shows not just where your courage originates, but also where you can take bold, decisive action. When you work consciously with these indicators, your bravery becomes not impulsive but balanced, purposeful, and sustainable.

Strong 3rd House - Initiative Courage

Your 3rd house of courage is strong: good dignity/placement of its lord and presence of Moon boost initiative, risk-taking, and speaking up. This shows you can face tough conversations, start new things, or meet challenges head-on instead of avoiding them. A strong 3rd builds communication power, quick decisions, and the "I will take the first step" mindset—the core key for courageous actions.

Strong Sun - Leadership Courage

Sun is strong and in the 4th house, giving leadership courage, self-respect, and willingness to stand in the spotlight.

Benefics in 1/3/6/10 - Balanced Courage

Benefics in 1/3/6/10 (Moon) balance and refine your courage—bravery with sound judgement. This mix means you don't act out of impulse alone; when you take bold steps, you carry empathy, ethics, and practicality, making your moves more sustainable and effective.

How can I overcome fears using astrological insights?

For Anand Kumar, overcoming fear is mapped through 5 key supports: benefic help to Moon (calm mind), strong 3rd/Mars (direct action), Jupiter support (faith), active 6th (work on daily fears), supported 8th/12th (transform deep/subconscious fears), and a strong Sun (self-respect shield). Working these levers turns fear from a reaction into a tool for growth—calm the mind, take the first step, hold faith, chip away at daily fears, process and release deep ones, and keep your identity clear, and over time fear loosens its grip.

Benefic Support to Moon - Calming Fears

Benefic support on the Moon (in its house or the 4th) helps calm fears. Moon with Moon bring emotional stability, reducing night/anxious fears. Meditation, water element, and Moon remedies amplify this calming effect. When the mind is calm, you can observe fear with clarity and choose responses wisely instead of reacting, breaking the long-term cycle of anxiety. This also shows that as your emotional security grows, old childhood fears and emotional wounds can gradually heal, reducing the base level of fear in life.

Strong 3rd Lord - Action Reduces Fear

A strong 3rd lord helps you choose action over avoidance. When fear arises, this placement gives courage to take small steps, speak up, and take measured risks, gradually reducing fear. It teaches that fear often shrinks after the "first move"; once you initiate, fear recedes and confidence grows.

Supported 8th - Transforming Fear

A supported 8th house/lord with Jupiter turns fear, crisis, and uncertainty into inner transformation. It shows deep psychological fears can be processed—therapy/deep practice converts them into strength; befriending the unknown turns fear into trust. This configuration suggests that life crises, breakdowns, and sudden changes can become turning points that awaken deeper strength and awareness if you face them with a learning attitude instead of only running away.

Supported 12th - Releasing Subconscious Fears

Benefic support to the 12th house/lord soothes subconscious fears, sleep issues, and overthinking. Meditation, breath work, and intentional solitude strengthen this support. It shows that "rest, pause, and release" are part of fear work—not just action but letting go is essential. As you build healthy boundaries and allow yourself periodic retreats, inner space clears and deeply buried fears start dissolving over time.

Strong Sun - Shield of Self-Respect

A strong Sun gives self-respect and a clear identity, buffering the impact of fear and criticism. Sun remedies (Surya Namaskar, offering water) reinforce this shield. Clarity of “who I am” shrinks the effect of fear and external negativity—this is the mental shield the Sun provides.

What does my chart reveal about my assertiveness and setting boundaries?

For Anand Kumar, assertiveness and boundaries show through 3 pillars: strong Lagna/Sun (self-worth), 3rd and 2nd for clear yes/no and respectful speech, strong 7th for balanced relating, balanced Saturn and disciplined Mars for enforcing limits, strong 10th for workplace clarity, and a supported Moon for guilt-free choices. Focusing on these helps you stay respectful yet firm with your boundaries—honouring others while still protecting your own time, energy, and emotional space.

Strong Sun - Clarity of Authority

A strong Sun (good dignity, away from 6/8/12) gives a healthy ego—letting you assert, ask for your due, and declare boundaries without shrinking under criticism.

Strong 3rd House - Clear Yes/No

A strong 3rd lord gives courage and direct speech. You can say polite but firm yes/no even on uncomfortable topics—core to holding boundaries.

Supported Moon - Guilt-Free Limits

A supported Moon (good state/support) gives emotional calm, reducing guilt-driven yes. With a calmer mind you set limits without fear or guilt. This combination shows you can understand others' feelings without completely abandoning yourself—balancing emotional sensitivity with healthy self-care boundaries. When the mind is steady, you are less likely to get pulled into emotional manipulation or excessive sympathy; you can say a loving but clear yes/no, which is the mark of a healthy emotional boundary.

How can I enhance my ability to say 'no' astrologically?

For Anand Kumar, the ability to say "no" is shown through 3 key areas: Lagna/Sun for inner self-worth, 2nd and 3rd for polite but clear speech and courage, 6th and 7th for limits in work and relationships, Saturn-Mars for enforcing "no" in action, the Moon for reducing guilt, and Rahu-Ketu for seeing where you over-adjust or suddenly cut off. Working on these points helps you learn a respectful, timely, and stable "no."

Root of Self-Respect - Lagna & Sun

A strong Lagna lord and/or a well-placed Sun show you can learn to value yourself from within. When the sense of "I also matter" grows, saying "no" feels less selfish and more like necessary self-care—the root of healthy boundaries.

3rd House - Courage to Say No

A strong 3rd lord increases inner courage and initiative so you can say "no" even when it feels uncomfortable. This configuration teaches that practicing honest yes/no in small, daily situations gradually strengthens your voice. Over time, each clear response rewrites your inner story from "I must stay silent" to "I am allowed to speak clearly"—this is how your assertive communication muscle grows.

Moon - Less Guilt, Clear No

A supported Moon reduces the burden of guilt and over-empathy. You can understand others and still say "right now I cannot do this" without breaking inside—this is emotional clarity behind your "no." When the mind is balanced, worries like "what will they think if I refuse?" soften, and a calm sense of "I also have limits" appears, making a guilt-free "no" possible.

What planetary configurations support my achievement and success?

For Anand Kumar, achievement and success are supported through 8 key configurations: strong 10th house (career and public recognition), 11th house (gains and fulfillment), 9th house (fortune and higher purpose), 5th house (intelligence and creativity), strong Sun (authority and leadership), strong Jupiter (wisdom and expansion), strong Mars (energy and action), balanced Saturn (discipline and long-term results), Raj Yoga (authority and recognition), Dhana Yoga (wealth and material success), and strong Lagna lord (overall strength). Focusing on these configurations helps you maximize your achievements and success.

Strong 5th House - Intelligence & Creativity

A strong 5th house/lord (good dignity, outside 6/8/12) brings success in intelligence, creativity, and innovative achievements. Mercury, Venus in 5th brings benefits from your intelligence, creative projects, and past karma. This configuration shows you can achieve success in innovative thinking, speculation, and creative work. The strength of the 5th house brings success in intellectual pursuits, creative expression, and innovative solutions. This configuration enhances your mental abilities and brings unique ideas and creative breakthroughs. The 5th house represents intelligence, creativity, education, speculation, and past karma, so when it's strong, it indicates that you have the planetary support to excel in fields requiring mental acuity, creative thinking, and innovative approaches. This placement also supports success in education, research, writing, arts, entertainment, and any field where original thinking and creativity are valued. Strong 5th house influence ensures that your intellectual investments and creative efforts yield recognition and success, and that you can leverage your mental talents to achieve your goals.

Strong Sun - Authority & Leadership

A strong Sun (good dignity, outside 6/8/12 or in 10th house) brings success in authority, leadership, and recognition. A strong Sun position brings you success in government/executive roles, public recognition, and leadership positions. This configuration shows you can work with authority and your achievements are visible on public platforms. The Sun's strength gives you confidence, self-respect, and leadership qualities that are necessary for success. The Sun represents your core identity, ego, authority, and leadership abilities, so when it's strong, it indicates that you have the planetary support to take on leadership roles, command respect, and achieve recognition for your efforts. This placement also supports success in government positions, administrative roles, and any field where authority and decision-making are important. Strong Sun influence ensures that you have the confidence and charisma to lead others, make important decisions, and handle positions of responsibility with grace and effectiveness. The Sun's energy also helps you maintain your integrity and ethical standards while achieving success, ensuring that your achievements are built on a solid foundation.

Dhana Yoga - Wealth & Material Success

Dhana Yoga (2nd, 5th, 9th, 11th lords connection) brings success in wealth, material success, and fulfillment. This configuration shows your material gains increase, wealth accumulation happens, and you can achieve financial fulfillment. The presence of Dhana Yoga supports your material success. This combination gives you multiple sources of income and financial stability. Dhana Yoga is a powerful wealth-giving combination formed when the lords of the 2nd house (wealth and family), 5th house (intelligence and speculation), 9th house (fortune and higher purpose), and 11th house (gains and income) connect with each other. This combination creates a favorable flow of wealth energy, ensuring that you have the planetary support to accumulate wealth, experience financial growth, and achieve material prosperity. The presence of Dhana Yoga indicates that your efforts in generating income are supported by your intelligence (5th), fortune (9th), and gains (11th), while your accumulated wealth (2nd) is protected and grows. This yoga brings success in business, investments, speculation, and any field where financial gains are possible. Dhana Yoga ensures that you can build wealth through multiple channels, experience steady financial growth, and achieve financial security and independence. The combination of these wealth-related houses creates a synergistic effect that amplifies your ability to generate, accumulate, and preserve wealth, leading to long-term financial prosperity and material fulfillment.

Strong 2nd House - Wealth Accumulation

A strong 2nd house/lord (good dignity, outside 6/8/12) brings success in wealth accumulation, resources, and financial stability. Benefic influence increases your wealth, helps accumulate savings, and brings financial security. This configuration shows you can accumulate and preserve wealth. The strength of the 2nd house brings success in financial resources, family wealth, and material possessions. The 2nd house represents wealth, family, speech, and accumulated resources, so when it's strong, it indicates that you have the planetary support to build wealth, maintain financial stability, and preserve your resources. This placement also supports success in banking, finance, family business, and any field related to wealth management and accumulation. Strong 2nd house influence ensures that your financial foundation is solid, your savings grow over time, and you can build lasting wealth through careful management and accumulation of resources.

Strong 3rd House - Efforts & Courage

A strong 3rd house/lord (good dignity, outside 6/8/12) brings success in efforts, courage, communication, and self-initiated actions. Moon in 3rd makes your efforts successful, increases courage, and improves communication skills. This configuration shows you can achieve success through your own efforts. The strength of the 3rd house brings success in self-motivation, initiative, and proactive approach. The 3rd house represents efforts, courage, communication, siblings, and self-initiated actions, so when it's strong, it indicates that you have the planetary support to take initiative, work hard, and achieve success through your own efforts. This placement also supports success in writing, communication, media, sports, and any field requiring courage and self-motivation. Strong 3rd house influence ensures that you have the drive to initiate projects, the courage to face challenges, and the communication skills to express yourself effectively, leading to success in competitive and challenging situations.

Strong Mercury - Intelligence & Communication

A strong Mercury (good dignity, outside 6/8/12 or in 2nd/10th house) brings success in intelligence, communication, business, and analytical abilities. A strong Mercury position gives you sharp intellect, effective communication, and business acumen. This configuration shows you can achieve success in intellectual pursuits, writing, business, and communication-based fields. Mercury represents intelligence, communication, business, writing, and analytical thinking, so when it's strong, it indicates that you have the planetary support to excel in fields requiring mental agility, communication skills, and business intelligence. This placement also supports success in writing, journalism, teaching, trading, technology, and any field where communication and intelligence are valued. Strong Mercury influence ensures that you can think quickly, communicate effectively, analyze situations accurately, and make smart business decisions, leading to success in intellectual and commercial endeavors.

Strong Moon - Mind & Emotional Stability

A strong Moon (good dignity, outside 6/8/12 or in 1st/4th house) brings success in mind, emotions, public recognition, and mental stability. A strong Moon position gives you emotional stability, mental clarity, and public appeal. This configuration shows you can achieve success in public-facing roles, emotional intelligence, and mental pursuits. The Moon represents mind, emotions, public, mother, and mental stability, so when it's strong, it indicates that you have the planetary support to maintain emotional balance, think clearly, and gain public recognition. This placement also supports success in public relations, hospitality, caregiving, and any field requiring emotional intelligence and public appeal. Strong Moon influence ensures that you have the mental stability to handle success, the emotional intelligence to work with others effectively, and the public appeal to gain recognition and support, leading to success in fields that require emotional connection and public interaction.

Rahu/Ketu - Unconventional Success

Rahu in 9th house brings success in unconventional success, sudden gains, and unique opportunities. This configuration shows you can achieve success through unconventional paths, technology, and unexpected sources. The presence of Rahu/Ketu brings your success in unique and unexpected ways. Rahu and Ketu in success houses (2nd, 5th, 9th, 10th, 11th) can bring sudden gains, unconventional success, and opportunities through technology, research, and unique approaches. Rahu brings material gains and sudden opportunities, while Ketu brings spiritual wealth and success through detachment and research. The presence of these nodes in success houses indicates that you can achieve success through non-traditional means, technology, and unexpected opportunities.

How does my astrology influence my approach towards success?

According to Anand Kumar's chart, your success approach is shaped by 5 key planetary influences. The positions of strong planets and houses in your chart show how you approach success—whether through leadership, action, wisdom, or unconventional methods. This analysis helps you understand your natural tendencies and how you can optimize your success strategy. When you approach according to your planetary strengths, your probability of success increases significantly.

Leadership & Authority-Oriented Approach

Your strong Sun and 10th house position makes your success approach leadership and authority-oriented. You tend to achieve success through leadership roles, public recognition, and executive positions. Your approach involves taking initiative, making decisions, and accepting responsibility. You excel in structured environments where hierarchy and authority are clear. Planning, organization, and systematic execution are important in your success strategy. You achieve success when you recognize your authority and develop leadership qualities.

Action & Initiative-Driven Approach

Your strong Mars and 3rd house position makes your success approach action-oriented and initiative-driven. You achieve success through direct action, hard work, and competitive spirit. Your approach involves quick decisions, immediate execution, and risk-taking. You excel in dynamic and fast-paced environments. Persistence, courage, and a never-give-up attitude are important in your success strategy. You achieve success when you stay proactive and face challenges directly.

Intelligence & Communication-Driven Approach

Your strong Mercury and 5th house position makes your success approach intelligence-based and communication-driven. You achieve success through mental agility, effective communication, and analytical thinking. Your approach involves research, planning, and strategic thinking. You excel in intellectual, creative, and communication-based fields. Adaptability, learning, and networking are important in your success strategy. You achieve success when you effectively use your intelligence and maintain clear communication.

Emotional & Public-Oriented Approach

Your strong Moon position makes your success approach emotional intelligence-based and public-oriented. You achieve success through emotional connection, public appeal, and intuitive understanding. Your approach involves empathy, adaptability, and emotional balance. You excel in public-facing, service-oriented, and emotionally connected fields. Emotional stability, public relations, and intuitive decisions are important in your success strategy. You achieve success when you use emotional intelligence and understand public needs.

Unconventional & Unique Approach

The presence of Rahu in success houses makes your success approach unconventional and unique. You achieve success through non-traditional paths, technology, and unexpected opportunities. Your approach involves innovation, risk-taking, and breaking norms. You excel in technology, research, and unconventional fields. Adaptability, innovation, and unique thinking are important in your success strategy. You achieve success when you try unique approaches beyond traditional methods and grab unexpected opportunities.

What astrological aspects influence my leadership abilities?

According to Anand Kumar's chart, your leadership abilities are influenced by 4 key astrological aspects: strong Sun (natural leadership), 10th house (career and public authority), Mars (action-oriented leadership), Jupiter (wisdom-based leadership), Saturn (discipline-based leadership), Raj Yoga (authority and recognition), and strength of Kendra houses (angular authority). This analysis helps you understand what your natural leadership qualities are and how you can develop your leadership abilities. When you engage in leadership roles according to your planetary strengths, your leadership effectiveness increases significantly.

Strong Sun - Natural Leadership

Your strong Sun position significantly influences your leadership abilities. The Sun represents authority, self-confidence, and natural leadership. Strong Sun position gives you natural authority, decision-making ability, and leadership qualities. You excel in leadership roles and people naturally accept your authority. The Sun's strength gives you confidence that is essential for leadership. Strong Sun influence ensures that you have the charisma, confidence, and natural authority to lead others effectively. This placement also supports success in government positions, executive roles, and any field where leadership and authority are important. The Sun represents your core identity, ego, and leadership abilities, so when it's strong, it indicates that you have the planetary support to take on leadership roles, command respect, and achieve recognition for your efforts.

Strong 10th Lord - Authority Through Career

Your strong 10th house lord Saturn position in Kendra strengthens your leadership abilities through career and profession. When the 10th lord is strong, you achieve professional authority, career recognition, and leadership positions. Your leadership naturally develops through career and profession. Strong 10th lord ensures that your leadership is recognized through your career and professional achievements. The 10th lord represents your career and professional authority, so when it's strong, it indicates that you have the planetary support to achieve leadership positions in your chosen field and gain recognition for your professional abilities.

Strong Lagna - Strong Leadership Foundation

Your strong Lagna lord and presence of Ascendant in Lagna is the strong foundation of your leadership abilities. The Lagna (1st house) represents personality, self, and overall strength. When the Lagna is strong, your overall personality supports leadership qualities. Your leadership style includes confidence, self-awareness, and strong identity. Strong Lagna ensures that you have the overall strength and confidence necessary for effective leadership. The Lagna is the

foundation that supports all other houses, so when it's strong, it enhances your ability to lead effectively in all areas of life.

Strong Kendra Houses - Angular Authority

Your strong Kendra houses (1, 4, 7, 10) position and presence of strong planets like Sun enhances your leadership abilities through angular authority. Kendra houses represent authority, stability, and public recognition. When these are strong, your leadership is naturally recognized and you achieve positions of authority. Strong Kendra houses ensure that your leadership has a solid foundation and is recognized publicly. Angular houses are considered very powerful in Vedic astrology and their strength indicates strong leadership potential.

How can I enhance my leadership skills using astrological knowledge?

According to Anand Kumar's chart, there are 9 key strategies to enhance your leadership skills: strengthen Sun (natural leadership), strengthen 10th house (career authority), strengthen Mars (action-oriented leadership), strengthen Jupiter (wisdom-based leadership), strengthen Lagna (leadership foundation), and form Raj Yoga (authority and recognition). This analysis provides you with specific remedies, gemstones, mantras, and practices that will help enhance your leadership abilities. When you implement these strategies, your leadership effectiveness increases significantly.

Strengthen Sun - Natural Leadership

To strengthen Sun: Wear Ruby (in gold, on Sunday), chant Om Suryaya Namah (108 times, during sunrise), wear Red/Orange colored clothes, fast on Sunday and offer water to Sun. Worship Sun and donate to Sun temples. Strengthening Sun is essential for enhancing leadership skills as Sun represents authority, confidence, and natural leadership. The Sun's strength gives you natural authority, decision-making ability, and leadership qualities. You excel in leadership roles and people naturally accept your authority. The Sun's strength gives you confidence that is essential for leadership. Strong Sun influence ensures that you have the charisma, confidence, and natural authority to lead others effectively. This placement also supports success in government positions, executive roles, and any field where leadership and authority are important. The Sun represents your core identity, ego, and leadership abilities, so when it's strong, it indicates that you have the planetary support to take on leadership roles, command respect, and achieve recognition for your efforts. Regular practice of Sun-related remedies will gradually enhance your leadership capabilities and help you develop the confidence and authority needed to lead effectively.

Strengthen 10th House - Career Authority

To strengthen 10th house: Wear Blue Sapphire (to strengthen 10th lord Saturn) Worship 10th lord Saturn, focus on career and profession, take professional development courses, and actively participate in leadership roles. The 10th house represents leadership and authority, so strengthening it is crucial for enhancing leadership skills. When the 10th house is strong, you achieve public recognition, professional authority, and leadership positions. Your leadership naturally develops through career and profession. Strong 10th house ensures that your leadership is recognized publicly, your authority is respected professionally, and you can achieve positions of power and responsibility. The 10th house is the most important house for leadership and authority in Vedic astrology, so its strength indicates strong leadership potential and the ability to command respect in professional and public settings. When you strengthen the 10th house through remedies and practices, you enhance your career prospects, gain professional recognition, and develop the authority needed to lead effectively in your chosen field. Focus on building your professional reputation,

taking on leadership responsibilities, and seeking opportunities that allow you to demonstrate your leadership capabilities.

Strengthen Mars - Action-Oriented Leadership

To strengthen Mars: Wear Red Coral (in gold or copper, on Tuesday), chant Om Mangalaya Namah (108 times), wear Red colored clothes, fast on Tuesday and donate to Mars temples. Worship Mars and engage in physical activities. Strengthening Mars is important for enhancing leadership skills as Mars gives energy, courage, and action-oriented approach. Mars's strength gives you courageous leadership, quick decision-making, and an action-oriented approach. Your leadership style includes energy, initiative, and competitive spirit. You face challenges directly and take decisive action. Strong Mars gives you the courage and energy to lead in challenging situations and make quick, effective decisions. Mars represents energy, action, courage, and determination, so when it's strong, it indicates that you have the planetary support to lead through action, take initiative, and handle competitive situations effectively. Regular practice of Mars-related remedies will enhance your ability to take decisive action, face challenges head-on, and lead with courage and determination. Engage in physical activities, sports, or martial arts to channel Mars energy positively and develop the physical and mental strength needed for effective leadership.

Strengthen Jupiter - Wisdom-Based Leadership

To strengthen Jupiter: Wear Yellow Sapphire (in gold, on Thursday), chant Om Guruve Namah (108 times), wear Yellow colored clothes, fast on Thursday and donate to Jupiter temples. Worship Jupiter and seek knowledge and wisdom. Strengthening Jupiter is important for enhancing leadership skills as Jupiter gives wisdom, ethical values, and wise decision-making. Jupiter's strength gives you wise leadership, ethical decision-making, and an expansion-oriented approach. Your leadership style includes wisdom, fairness, and long-term vision. You guide people and lead with ethical values. Strong Jupiter gives you the wisdom and ethical foundation to lead with integrity and make decisions that benefit everyone. Jupiter represents wisdom, knowledge, expansion, and ethical values, so when it's strong, it indicates that you have the planetary support to lead with wisdom, make ethical decisions, and expand your influence positively. Regular practice of Jupiter-related remedies will enhance your wisdom, ethical judgment, and ability to make decisions that benefit all stakeholders. Study philosophy, ethics, and leadership principles to develop the wisdom needed for effective leadership. Seek guidance from mentors and teachers who embody ethical leadership values.

Strengthen Lagna - Leadership Foundation

To strengthen Lagna: Wear Diamond (to strengthen Lagna lord Venus) Worship Lagna lord Venus, develop self-confidence, strengthen personal identity, and improve overall personality. Lagna is the foundation of leadership, so strengthening it is essential for enhancing leadership skills. When the Lagna is strong, your overall personality supports leadership qualities. Your leadership style includes confidence, self-awareness, and strong identity. Strong Lagna ensures that you have the overall strength and confidence necessary for effective leadership. The Lagna is the foundation that supports all other houses, so when it's strong, it enhances your ability to lead effectively in all areas of life. Regular practice of Lagna-related remedies will strengthen your core identity, boost your self-confidence, and develop the personal foundation needed for effective leadership. Focus on personal development, self-awareness practices, and building a strong sense of identity that aligns with your leadership goals.

Form Raj Yoga - Authority & Recognition

To form Raj Yoga: Strengthen lords of Kendra houses (1, 4, 7, 10) and Trikona houses (1, 5, 9). Worship these lords, engage in activities related to these houses, and wear gemstones of these lords. Raj Yoga gives authority, recognition, and public success, so forming it is highly beneficial for enhancing leadership skills. The presence of Raj Yoga significantly enhances your leadership abilities. This yoga gives you natural leadership qualities, automatic recognition, and positions of authority. Your leadership is automatically recognized and you achieve high-status positions. Raj Yoga is considered one of the most powerful combinations for leadership and authority in Vedic astrology. This combination creates a powerful synergy that elevates your status, brings recognition, and ensures that your leadership efforts are rewarded with authority and respect. Regular practice of strengthening Kendra and Trikona lords will gradually form Raj Yoga and enhance your leadership capabilities. Focus on activities that strengthen both angular (Kendra) and trine (Trikona) houses to create this powerful leadership combination.

Strengthen Mercury - Communication Leadership

To strengthen Mercury: Wear Emerald (in gold or silver, on Wednesday), chant Om Budhaya Namah (108 times), wear Green colored clothes, fast on Wednesday and donate to Mercury temples. Worship Mercury and develop communication skills. Strengthening Mercury is important for enhancing leadership skills as Mercury gives communication, intelligence, and strategic thinking. Mercury's strength gives you intelligent leadership, effective communication, and authoritative decision-making. Your leadership style has a perfect balance of intelligence, communication skills, and authority. Budha-Aditya Yoga combines intelligence with authority, making you an effective communicator and leader. This combination is particularly powerful for leadership roles that require both intelligence and authority. Regular practice of Mercury-related remedies will enhance your communication abilities, strategic thinking, and intellectual leadership capabilities. Focus on developing your communication skills, learning new languages, studying strategic planning, and engaging in intellectual pursuits that enhance your leadership effectiveness.

Balance Saturn - Discipline-Based Leadership

To balance Saturn: Wear Blue Sapphire (in gold or iron, on Saturday, only after expert advice), chant Om Shanaishcharaya Namah (108 times), wear Blue/Black colored clothes, fast on Saturday and donate to Saturn temples. Worship Saturn and develop discipline and patience. Balancing Saturn is important for enhancing leadership skills as Saturn gives discipline, structure, and long-term planning. Balanced Saturn position gives you disciplined leadership, systematic approach, and long-term planning ability. Your leadership style includes structure, organization, and patience. You lead through systematic methods and focus on long-term goals. Balanced Saturn gives you the discipline and structure necessary for effective leadership and long-term success. Saturn represents discipline, hard work, structure, and long-term results, so when it's balanced and strong, it indicates that you have the planetary support to lead with discipline, build lasting structures, and achieve long-term success through systematic effort. Regular practice of Saturn-related remedies will enhance your discipline, patience, and ability to build lasting leadership structures. Focus on developing systematic approaches, creating organizational structures, and building long-term plans that support sustainable leadership success.

Activate Kendra Houses - Angular Authority

To activate Kendra houses (1, 4, 7, 10): Strengthen lords of these houses, engage in activities related to these houses, and wear gemstones of these lords. Kendra houses represent authority, stability, and public recognition, so activating them is beneficial for enhancing leadership skills. Strong Kendra houses position enhances your leadership abilities through angular authority. When these are strong, your leadership is naturally recognized and you achieve positions of authority. Strong Kendra houses ensure that your leadership has a solid foundation and is recognized publicly. Angular houses are considered very powerful in Vedic astrology and their strength indicates strong leadership potential. Regular practice of strengthening Kendra lords will activate these houses and enhance your leadership capabilities. Focus on activities that strengthen each Kendra house: 1st house (self and identity), 4th house (home and foundation), 7th house (partnerships and public relations), and 10th house (career and authority) to create a comprehensive leadership foundation.

What does my astrology chart reveal about my true self and identity?

According to Anand Kumar's chart, your true self and identity is revealed through 6 key astrological factors: strong Lagna (core identity), Sun (soul and ego), Moon (mind and emotions), Jupiter (spiritual identity), 4th house (inner self), 5th house (creative expression), and 9th house (dharma and philosophy). This analysis helps you understand what your authentic identity is and how you can discover and express your true self. When you understand your identity according to your planetary strengths, you can align with your authentic self.

Strong Lagna - Identity Foundation

Your strong Lagna (1st house) and presence of Ascendant in Lagna is the strong foundation of your core identity and personality. The Lagna represents your outer personality, physical appearance, and your approach to the world. When the Lagna is strong, your identity is clear, confident, and well-defined. You can easily express your true self and people recognize you through your authentic personality. Strong Lagna ensures that you have a clear sense of self, strong personality, and the ability to project your true identity to the world. The 1st house is the most important house for identity in Vedic astrology, representing your self, body, personality, and how you present yourself to the world.

Strong Sun - Self-Image

Your chart has strong Sun position, which directly influences your core identity and self-image. The Sun represents soul, ego, and life force. Strong Sun gives you a strong sense of self, clear identity, and natural leadership qualities. You can confidently express your true self and people recognize your authentic personality. Sun represents your core identity, ego, and life force, so when it's strong or in the 1st house, it indicates that you have a clear sense of who you are and the confidence to express your true self.

Strong Moon - Emotional Identity

Your Moon is placed strong position, which represents your emotional identity and inner self. The Moon symbolizes mind, emotions, and inner nature. Strong Moon gives you emotional intelligence, intuitive understanding, and deep connection with your inner self. You can understand your emotions and express your true emotional nature. Moon represents your mind, emotions, and inner nature, so its placement in 1st or 4th house or strong position indicates that you have a clear understanding of your emotional identity and can connect deeply with your inner self.

Strong 4th House - Inner Self

Your strong 4th house and presence of Sun, Saturn represents your inner self and emotional foundation. The 4th house symbolizes mind, emotions, home, and inner peace. When the 4th house is strong, your inner identity is clear and you can understand your true emotional nature. You are deeply connected with your inner self and can recognize your authentic emotional needs. Strong 4th house ensures that you have a strong emotional foundation, clear inner identity, and the ability to connect with your true emotional self.

Strong 5th House - Creative Identity

Your strong 5th house and presence of Mars, Mercury, Venus represents your creative identity and self-expression. The 5th house symbolizes creativity, intelligence, self-expression, and unique talents. When the 5th house is strong, you can express your true creative self and discover your unique talents. You can define your identity through your authentic creative expression. Strong 5th house ensures that you have a clear creative identity, strong self-expression abilities, and the capacity to discover and express your unique talents.

Strong Mercury - Intellectual Identity

Your chart has strong Mercury position, which represents your intellectual identity and communication style. Mercury symbolizes intelligence, communication, and analytical thinking. Strong Mercury gives you clear thinking, effective communication, and ability to express your ideas. You can express your intellectual identity through your communication and thinking style. Mercury represents intelligence, communication, and analytical thinking, so when it's in 1st house or strong, it indicates that your intellectual identity is a key part of who you are.

How can I discover and express my authentic self using astrology?

According to Anand Kumar's chart, there are 6 key strategies you can use to discover and express your authentic self: strengthen Lagna (core identity), strengthen Sun (self-expression), strengthen Moon (inner self), strengthen Jupiter (spiritual identity), strengthen 4th house (inner foundation), strengthen 5th house (creative expression), and strengthen 9th house (dharma discovery). This analysis provides you with specific remedies, gemstones, mantras, and practices that will help you in authentic self-discovery and expression. When you implement these strategies, you can effectively discover and express your true self.

Strengthen Lagna - Identity Foundation

To strengthen Lagna: Wear Diamond (to strengthen Lagna lord Venus) Worship Lagna lord Venus, practice self-awareness, meditate, and develop your personality. Lagna is the foundation of your core identity, so strengthening it is essential for authentic self-discovery. When the Lagna is strong, you can clearly understand your true self and confidently express it. Strong Lagna ensures that you have a clear sense of self, strong personality foundation, and the ability to discover and express your authentic identity. Regular practice of Lagna-related remedies will strengthen your core identity and help you connect with your true self. Focus on self-reflection, journaling, and activities that help you understand who you truly are.

Strengthen Sun - Self-Expression

To strengthen Sun: Wear Ruby (in gold, on Sunday), chant Om Suryaya Namah (108 times, during sunrise), wear Red/Orange colored clothes, fast on Sunday and offer water to Sun. Worship Sun and donate to Sun temples. Strengthening Sun is essential for authentic self-discovery and expression as Sun represents soul, ego, and core identity. The Sun's strength gives you a strong sense of self, clear identity, and confidence to express your true self. You can confidently discover and express your authentic self. Strong Sun ensures that you have the confidence and clarity to discover and express your authentic self without fear or hesitation. Regular practice of Sun-related remedies will enhance your ability to connect with your true self and express it authentically.

Strengthen Moon - Inner Self Discovery

To strengthen Moon: Wear Pearl (in silver, on Monday), chant Om Chandraya Namah (108 times, at night), wear White colored clothes, fast on Monday and offer water to Moon. Worship Moon and practice meditation. Strengthening Moon is important for authentic self-discovery as Moon represents mind, emotions, and inner self. The Moon's strength gives you emotional intelligence, intuitive understanding, and deep connection with your inner self. You can understand your

true emotional nature and connect with your inner self. Strong Moon ensures that you can connect deeply with your inner self and understand your true emotional identity. Regular practice of Moon-related remedies will enhance your ability to discover your inner self and express your authentic emotions.

Strengthen Jupiter - Spiritual Identity

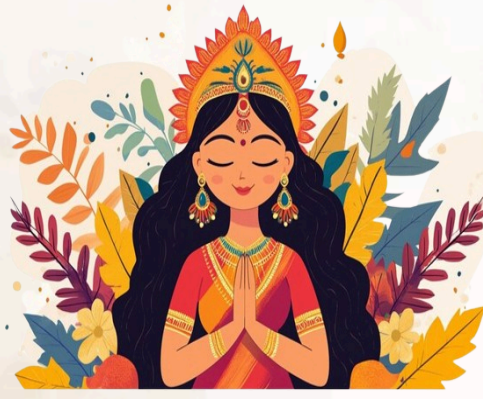
To strengthen Jupiter: Wear Yellow Sapphire (in gold, on Thursday), chant Om Guruve Namah (108 times), wear Yellow colored clothes, fast on Thursday and donate to Jupiter temples. Worship Jupiter and seek knowledge and wisdom. Strengthening Jupiter is important for authentic self-discovery as Jupiter represents wisdom, dharma, and spiritual identity. Jupiter's strength gives you spiritual wisdom, ethical values, and connection with your higher purpose. You can understand your true spiritual nature and live your life according to your dharma. Strong Jupiter ensures that you can discover your spiritual identity and align your life with your higher purpose. Regular practice of Jupiter-related remedies will enhance your ability to discover your dharma and express your authentic spiritual self.

Strengthen 9th House - Dharma Discovery

To strengthen 9th house: Wear Blue Sapphire (to strengthen 9th lord Saturn) Worship 9th lord Saturn, study philosophy, understand dharma, and practice spiritual activities. The 9th house represents higher knowledge, philosophy, dharma, and spiritual purpose, so strengthening it is highly beneficial for authentic self-discovery. When the 9th house is strong, you can understand your true philosophical nature and live your life according to your dharma. Strong 9th house ensures that you can discover your dharma and align your life with your higher purpose. Focus on spiritual studies, ethical living, and practices that help you discover your life's purpose.

Strengthen Venus - Aesthetic Expression

To strengthen Venus: Wear Diamond (in gold or silver, on Friday), chant Om Shukraya Namah (108 times), wear White/Pink colored clothes, fast on Friday and donate to Venus temples. Worship Venus and engage in aesthetic activities. Strengthening Venus is important for authentic self-expression as Venus represents beauty, art, relationships, and values. Venus's strength gives you aesthetic sense, appreciation for beauty, and ability to express your values. You can express your aesthetic and relational identity through your values and relationships. Strong Venus ensures that you can express your authentic aesthetic and relational self. Focus on artistic pursuits, harmonious relationships, and expressing your values authentically.



Thank You



JYOTISHAM
ASTRO API

For Any Inquiries Please Contact

Synilogic Tech Private Limited
C-7, Santosh Nagar-1, Borkheda, Kota, India, Rajasthan

www.synilogictech.com

Synilogictech@gmail.com

[919358656189](tel:919358656189)